



Sheffield
Hallam
University

STUDY DISCOVER EXPLORE

A guide for international students

www.shu.ac.uk/international

A guide for international students

Where is Sheffield?

Sheffield is right in the middle of the UK with excellent transport links to other UK cities and Europe. We are just two hours from London and one hour from Manchester by train.

Europe is on our doorstep

Lucas Leung from Brazil took every opportunity to travel when he was studying engineering at Sheffield Hallam – here he is in some of his favourite European destinations.

..... Rail links

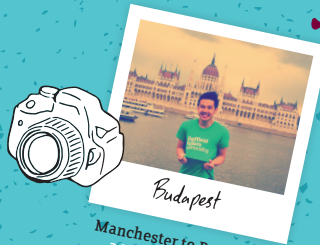
— Major roads

— Motorway



Paris

Manchester to Paris
1 hour 30 minutes



Budapest

Manchester to Budapest
2 hours 35 minutes



Berlin

Doncaster Sheffield to Berlin
1 hour 50 minutes



Munich

Birmingham to Munich
1 hour 50 minutes



Rome

East Midlands to Rome
2 hours 40 minutes

WHAT'S IN THIS GUIDE

6-7

CHOOSING WHERE TO STUDY

How do I choose?

8-13

INTRODUCING SHEFFIELD

My favourite places in Sheffield

Six awesome events

Amazing food

14-21

WHY SHEFFIELD HALLAM?

Sheffield Hallam in three words

We love our campuses

Your new home

Supporting your dreams

22-27

PREPARING TO TRAVEL TO THE UK

What to pack?

Settle into Sheffield life

Go for it!

28-49

CHOOSE THE RIGHT COURSE FOR YOU

Foundation

Undergraduate

Postgraduate

HOW DO I CHOOSE?

What to think about when you're choosing a university

BY OPEYEMI OJO

Home country: Nigeria

Course: MSc Logistics and Supply Chain Management



1.

Make sure you're happy with your course

Take a look in the mirror and question yourself about the course you want to study. Think about whether you're passionate about the subject and what benefits you'll gain.

2.

Review the available options

Find out the entry requirements for the course and get a feel for if it's right for you. Check if any bodies or organisations accredit the course as an approved course is a guarantee of respectability.

3.

Take care with your application

Write about the skills and experiences you have which make you the perfect candidate. Let someone proofread your application for any grammar or spelling mistakes.

4.

Check on the required paperwork and visas

This can appear complex at first but it's actually easy to follow the steps to complete your visa application. I kept in touch regularly with the University's office in Nigeria who were really supportive.

5.

Decide what's most important to you

When you're considering where to study, know what to prioritise. This could be sports facilities, transport links, student societies – or just how you feel about the city and campus.



MY FAVOURITE PLACES IN SHEFFIELD



BY HALLIE NGYUEN
Home country: Vietnam
Course: MSc Real Estate



ALL
FREE
TO
VISIT

1. **BOTANICAL GARDENS**

Right next to our
Collegiate Campus.

2. **MOOR MARKET**

Buy food from all
over the world at
this indoor market.

3. **THE PEAK DISTRICT**

One of the UK's
most popular
national parks.

4. **WESTON PARK MUSEUM**

Learn about the
history of Sheffield.



6 AWESOME EVENTS

HAPPENING IN SHEFFIELD



DOC/FEST

Every year, we welcome film makers and enthusiasts to one of Europe's leading documentary film festivals.



SHEFFIELD FOOD FESTIVAL

A celebration of world cuisine with stalls, free samples and demonstrations.



CLIFFHANGER

Sheffield's very own festival of outdoor sports and activities.



VARSITY

The city's two universities compete in over 50 sporting events.



TRAMLINES

For one weekend in July, this music festival takes over the city with 100,000 people watching hundreds of bands in dozens of venues.

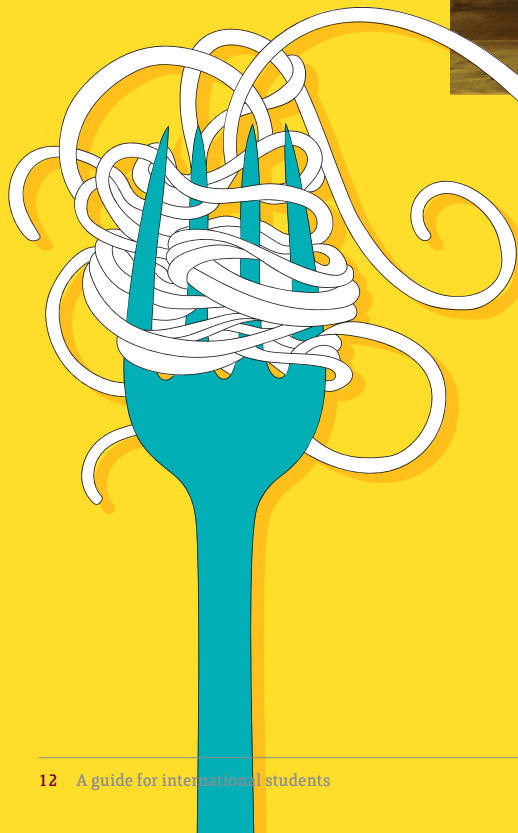


SNOOKER WORLD CHAMPIONSHIPS

The best snooker players in the world compete at the Crucible Theatre

AMAZING FOOD

4 of our favourite places to eat in Sheffield



1

1. STREET FOOD CHEF

streetfoodchef.co.uk
@streetfoodchef
@streetfoodchef



2

2. FANOUSH FALAFEL SALAD BAR

fanoushfalafelbar.co.uk
@fanoushfalafel



3

3. SMOKE

smokebbq.co.uk
@smokebbquk
@smokebbquk



4

4. STEAM YARD

steamyard.co.uk
@steamyard
@steamyard



Sheffield Hallam in three words.

We asked our students and here's what they said.



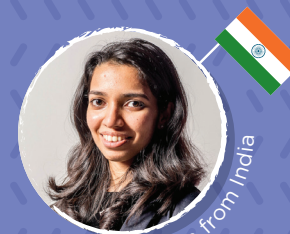
Emiola from Nigeria

FRIENDLY
Positive
ENGAGING



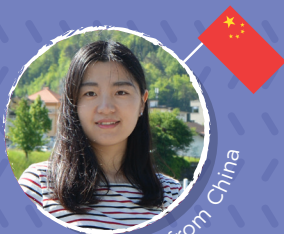
Sebastian from Denmark

DIVERSE
EDUCATIONAL
unforgettable



Harsha from India

Scenic
FRIENDLY
HAPPENING



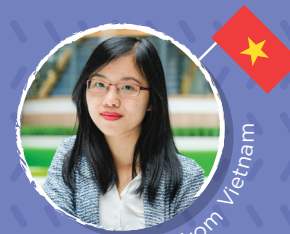
Rui from China

Memorable
FRIENDLY
MODERN



Karolin from Germany

International
Varied
Supportive



Tracy from Vietnam

Friendly
DYNAMIC
INSPIRING

WE LOVE OUR CAMPUSES

1. CITY CAMPUS

Our City Campus is in the middle of Sheffield's city centre, just two minutes' walk from the bus and train stations.

1

2. COLLEGIATE CAMPUS

Our Collegiate Campus is in the Ecclesall Road student district, a 20-minute walk from our City Campus.

2



3

3. SHEFFIELD INSTITUTE OF ARTS

A £9m development of one of the city's most iconic buildings.



4

4. SHEFFIELD INSTITUTE OF EDUCATION

Our new landmark £30m building with specialist teacher training facilities.



5

5. HEART OF THE CAMPUS

A landmark building with innovative teaching and learning spaces at our Collegiate Campus.



6

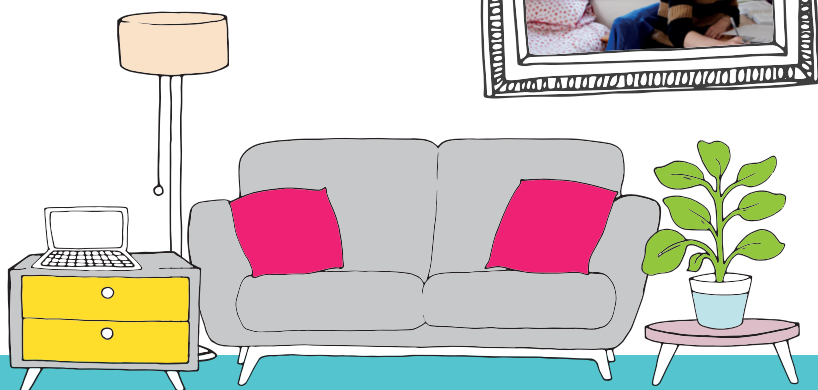
6. LIBRARIES OPEN 24/7

Both of our campuses have libraries which are open 24 hours a day, all year round.

We've invested more than £100m in teaching spaces in the last decade.

YOUR NEW HOME

Our Accommodation Team on campus will support you to find somewhere to live which suits your tastes, needs and budget.



SAFE AND SECURE

All of our residences and trusted private sector properties are safe and secure. They're all inspected to ensure they comply with strict standards.

CLOSE TO OUR CAMPUSES

We have over 30 halls of residence and they are in popular student areas near our campuses. You're never more than a 30-minute walk from your lectures.

24/7 SUPPORT

When you move into our halls of residence, you'll join a friendly community with support staff available to help you. You'll also have free wi-fi access so it's easy to stay in touch with family back home.

You can apply for accommodation online once you've accepted an offer to study with us.

Find out more at

shu.ac.uk/accommodation

Supporting your

Dreams

We have a dedicated Careers and Employability Centre where you can go for advice and information about your career choices.



TARUKA

Home country: India

Course: MA Sports Journalism

Taruka completed an internship at Manchester United with the support of a grant from the Careers and Employability Centre.

“An internship at Manchester United is a dream come true for anyone who loves sport.”

Our careers advisers run one-to-one advice sessions about CV writing and interview technique.

Our Student Employment Service recruits for hundreds of part-time roles both on and off campus.

CATO

Home country: Turkey

Course: MBA

After graduating, Cato successfully applied for a job as a systems analyst at Mercedes-Benz in his hometown of Istanbul.

“What amazed me about Sheffield Hallam’s MBA is the focus on personal development, which has been crucial to my role at Mercedes-Benz.”

Our network is your network

We have long-established relationships with 3,500 businesses including Adidas, Disney, Sony and the BBC.

Every year we offer over 19,000 paid work experience placements.

We have teams to support you to find placements and work experience which help your career plans.



WHAT TO PACK?

A few tips on what to pack before travelling to the UK



BY CHRISTINE HO

Home country: Malaysia

Course: MSc Accounting and Finance



Bring travel size toiletries and a small towel. After a long flight and jet lag, I didn't feel like going shopping as soon as I arrived.

I brought some comfort food from my home country, including a packet of my favourite cookies and some instant noodles.

You need a winter jacket to keep warm in Sheffield!

As for daily necessities, there are shops everywhere within walking distance and everything is very affordable.

One thing I wish I'd brought from home was my revision notes from my undergraduate degree as a way of refreshing my memory for my masters course.

SETTLE INTO SHEFFIELD LIFE

TOP TIPS FROM
THE INTERNATIONAL
EXPERIENCE TEAM

INTRODUCE YOURSELF

You will be meeting a lot of new people and everyone around you will be just as nervous as you are. Take the first step and introduce yourself.

DISCOVER THE CITY

Explore the city around you! This will help you feel more confident and at home with your surroundings.

EXPLORE THE UNIVERSITY

Find out where your buildings and teaching rooms are. It will help you feel confident going into your first few lectures and seminars.



MAKE YOUR NEW PLACE YOUR OWN

Decorate your room with things you like and make it your own space.

KEEP BUSY AND GET INVOLVED

Try to get involved with societies, sports, volunteering or trips and keep busy.

If you need help or have any questions, just ask!

shu.ac.uk/internationalsupport

GO FOR IT!

By Daniel Hamonangan
Home country: Indonesia
Course: MSc IT Management



"Being part of the Conversation Club has really expanded my network so I have made friends from all over the world."



"I went on every visit and trip organised by GoGlobal. It was great to visit so many places without any worries about getting lost or being alone in a different place."



"I joined the International Career Enhancement (ICE) Club to support other new international students and make them feel welcome. I wanted to return the favour after the support I received."



Choose the right course for you

We offer more than 700 courses in a diverse range of subject areas at undergraduate and postgraduate level.

For the most up-to-date course information, visit www.shu.ac.uk/prospectus

We made every reasonable effort to ensure that the information in this guide was accurate at the time of print in July 2017.

Pre-degree courses

| Course | Web address |
|---|--|
| Extended Degree Programme – Art and Design | www.shu.ac.uk/1324 |
| Extended Degree Programme – Biosciences and Chemistry | www.shu.ac.uk/613 |
| Extended Degree Programme – Business | www.shu.ac.uk/1422 |
| Extended Degree Programme – Computing | www.shu.ac.uk/1386 |
| Extended Degree Programme – Media Arts and Communication | www.shu.ac.uk/1423 |
| Extended Degree Programme – Engineering and Mathematics | www.shu.ac.uk/1125 |
| International Foundation Programme: – Art, Design and Media – Business, Law and Social Sciences – Science, Technology, Engineering and Maths | www.shu.ac.uk/ifp |
| Graduate Certificate – International Pre-Masters in Business and English | www.shu.ac.uk/326 |

English language

| | |
|---|--|
| Pre-sessional English for Academic Purposes | www.shu.ac.uk/1232 |
| Learning English for Academic Purposes (LEAP) | www.shu.ac.uk/1233 |

UNDERGRADUATE

Accounting, banking and finance

| Qualification | Course | Web address |
|---------------|--|--|
| BA (Hons) | Accounting and Economics | www.shu.ac.uk/1393 |
| BA (Hons) | Accounting and Finance | www.shu.ac.uk/1146 |
| BSc (Hons) | Economics | www.shu.ac.uk/1392 |
| BA (Hons) | Finance and Banking | www.shu.ac.uk/1073 |
| BA (Hons) | Finance and Economics | www.shu.ac.uk/1075 |
| BA (Hons) | Finance and Investment | www.shu.ac.uk/1074 |
| BA (Hons) | Forensic Accounting | www.shu.ac.uk/867 |
| BA (Hons) | International Banking and Finance (top up) | www.shu.ac.uk/1169 |

Architecture

| | | |
|------------|--------------------------|--|
| BSc (Hons) | Architectural Technology | www.shu.ac.uk/652 |
| BSc (Hons) | Architecture | www.shu.ac.uk/715 |

Art and design

| | | |
|-----------|--------------------------------------|--|
| BA (Hons) | Fashion Design | www.shu.ac.uk/773 |
| BA (Hons) | Fashion Management and Communication | www.shu.ac.uk/1323 |
| BA (Hons) | Fine Art | www.shu.ac.uk/517 |
| BA (Hons) | Graphic Design | www.shu.ac.uk/694 |
| BA (Hons) | Illustration | www.shu.ac.uk/1322 |
| BA (Hons) | Interior Design | www.shu.ac.uk/679 |
| BA (Hons) | Jewellery and Metalwork | www.shu.ac.uk/727 |
| BA (Hons) | Product Design | www.shu.ac.uk/496 |
| BA (Hons) | Product Design: Furniture | www.shu.ac.uk/677 |

Biosciences and chemistry

| Qualification | Course | Web address |
|-------------------|--------------------|--|
| BSc (Hons) /MSci | Biochemistry | www.shu.ac.uk/1181 |
| BSc (Hons) /MSci | Biology | www.shu.ac.uk/1185 |
| BSc (Hons) /MSci | Biomedical Science | www.shu.ac.uk/1180 |
| BSc (Hons) /MChem | Chemistry | www.shu.ac.uk/1184 |
| BSc (Hons) /MSci | Human Biology | www.shu.ac.uk/1182 |

Business and management

| | | |
|-----------|--|--|
| BA (Hons) | Business Analytics | www.shu.ac.uk/1366 |
| BA (Hons) | Business and Enterprise Management | www.shu.ac.uk/753 |
| BA (Hons) | Business and Enterprise Management (top up) | www.shu.ac.uk/1406 |
| BA (Hons) | Business and Enterprise Management (two year top up) | www.shu.ac.uk/1407 |
| BA (Hons) | Business and Finance (top up) | www.shu.ac.uk/989 |
| BA (Hons) | Business and Finance (two year top up) | www.shu.ac.uk/949 |
| BA (Hons) | Business and Financial Management | www.shu.ac.uk/570 |
| BA (Hons) | Business and Human Resource Management | www.shu.ac.uk/675 |
| BA (Hons) | Business and Human Resource Management (top up) | www.shu.ac.uk/1408 |
| BA (Hons) | Business and Human Resource Management (two year top up) | www.shu.ac.uk/1409 |
| BA (Hons) | Business and Marketing | www.shu.ac.uk/676 |
| BA (Hons) | Business and Marketing (one year top-up) | www.shu.ac.uk/1412 |
| BA (Hons) | Business and Marketing (two year top-up) | www.shu.ac.uk/1413 |

Business and management continued

| Qualification | Course | Web address |
|---------------|--|--|
| BA (Hons) | Business Economics | www.shu.ac.uk/538 |
| BA (Hons) | Business Management (top up) | www.shu.ac.uk/757 |
| BA (Hons) | Business Management (two year top up) | www.shu.ac.uk/988 |
| BA (Hons) | Business Studies | www.shu.ac.uk/670 |
| BA (Hons) | Facilities Management (top up) | www.shu.ac.uk/875 |
| BA (Hons) | International Business | www.shu.ac.uk/663 |
| BA (Hons) | International Business (top up) | www.shu.ac.uk/788 |
| BA (Hons) | International Business (two year top up) | www.shu.ac.uk/1394 |
| BA (Hons) | International Business with French | www.shu.ac.uk/659 |
| BA (Hons) | International Business with German | www.shu.ac.uk/1223 |
| BA (Hons) | International Business with Spanish | www.shu.ac.uk/1222 |
| BA (Hons) | Marketing | www.shu.ac.uk/658 |
| BA (Hons) | Marketing Communications and Advertising | www.shu.ac.uk/576 |

Childhood studies

| | | |
|-----------|-------------------------|--|
| BA (Hons) | Childhood Studies | www.shu.ac.uk/810 |
| BA (Hons) | Early Childhood Studies | www.shu.ac.uk/569 |

Computing

| | | |
|------------|-----------------------------------|--|
| BSc (Hons) | Business and ICT | www.shu.ac.uk/688 |
| BSc (Hons) | Computer and Information Security | www.shu.ac.uk/630 |
| BSc (Hons) | Computer Networks | www.shu.ac.uk/1129 |
| BSc (Hons) | Computer Science | www.shu.ac.uk/1120 |
| BSc (Hons) | Computer Science for Games | www.shu.ac.uk/720 |
| MComp | Computer Science for Games | www.shu.ac.uk/800 |
| BSc (Hons) | Computer Security with Forensics | www.shu.ac.uk/1097 |

Computing continued

| Qualification | Course | Web address |
|---------------|--|--|
| BSc (Hons) | Computing | www.shu.ac.uk/772 |
| BSc (Hons) | Computing Management (top up) | www.shu.ac.uk/103 |
| BSc (Hons) | Information Technology with Business Studies | www.shu.ac.uk/547 |
| BSc (Hons) | Information Technology with Business Technologies (top up) | www.shu.ac.uk/488 |
| BSc (Hons) | Information Technology with Digital Media (top up) | www.shu.ac.uk/513 |
| BSc (Hons) | Information Technology with Networks (top up) | www.shu.ac.uk/510 |
| BEng (Hons) | Software Engineering | www.shu.ac.uk/494 |
| MEng | Software Engineering | www.shu.ac.uk/690 |

Construction, building and surveying

| | | |
|------------|---------------------------------|--|
| BSc (Hons) | Building Surveying | www.shu.ac.uk/723 |
| BSc (Hons) | Construction Project Management | www.shu.ac.uk/667 |
| BSc (Hons) | Quantity Surveying | www.shu.ac.uk/711 |

Criminology

| | | |
|------------|----------------------------|--|
| BA (Hons) | Criminology | www.shu.ac.uk/731 |
| BSc (Hons) | Criminology and Psychology | www.shu.ac.uk/725 |
| BA (Hons) | Criminology and Sociology | www.shu.ac.uk/726 |

Diagnostic radiography

| | | |
|------------|------------------------|--|
| BSc (Hons) | Diagnostic Radiography | www.shu.ac.uk/611 |
|------------|------------------------|--|

Education studies

| | | |
|-------------------|----------------------------------|--|
| Foundation Degree | Early Years | www.shu.ac.uk/100 |
| BA (Hons) | Education - Early Years (top up) | www.shu.ac.uk/969 |

Education studies continued

| Qualification | Course | Web address |
|-------------------|---|--|
| Foundation Degree | Education and Learning Support | www.shu.ac.uk/1352 |
| BA (Hons) | Education and Learning Support (top up) | www.shu.ac.uk/338 |
| BA (Hons) | Education Studies | www.shu.ac.uk/531 |
| BA (Hons) | Education with Psychology and Counselling | www.shu.ac.uk/809 |

Engineering

| | | |
|-------------|---------------------------------------|--|
| BEng (Hons) | Aerospace Engineering | www.shu.ac.uk/993 |
| MEng | Aerospace Engineering | www.shu.ac.uk/994 |
| BEng (Hons) | Automotive Engineering | www.shu.ac.uk/501 |
| MEng | Automotive Engineering | www.shu.ac.uk/1371 |
| MEng | Chemical Engineering | www.shu.ac.uk/1361 |
| BEng (Hons) | Chemical Engineering | www.shu.ac.uk/1363 |
| BEng (Hons) | Computer Systems Engineering | www.shu.ac.uk/534 |
| BEng (Hons) | Electrical and Electronic Engineering | www.shu.ac.uk/580 |
| MEng | Electrical and Electronic Engineering | www.shu.ac.uk/737 |
| BEng (Hons) | Electrical Engineering (top up) | www.shu.ac.uk/1105 |
| BEng (Hons) | Electrical Power Engineering | www.shu.ac.uk/1395 |
| BEng (Hons) | Electronic Engineering | www.shu.ac.uk/524 |
| MEng | Food Engineering | www.shu.ac.uk/1247 |
| BEng (Hons) | Food Engineering | www.shu.ac.uk/1354 |
| BEng (Hons) | Manufacturing Engineering (top up) | www.shu.ac.uk/1269 |
| BEng (Hons) | Materials Engineering | www.shu.ac.uk/1162 |
| MEng | Materials Engineering | www.shu.ac.uk/1370 |
| BEng (Hons) | Mechanical Engineering | www.shu.ac.uk/579 |
| MEng | Mechanical Engineering | www.shu.ac.uk/730 |
| BEng (Hons) | Railway Engineering | www.shu.ac.uk/1397 |

| English | | |
|--------------------|--|--|
| Qualification | Course | Web address |
| BA (Hons) | Creative Writing | www.shu.ac.uk/660 |
| BA (Hons) | English | www.shu.ac.uk/532 |
| BA (Hons) | English and History | www.shu.ac.uk/763 |
| BA (Hons) | English Language | www.shu.ac.uk/795 |
| BA (Hons) | English Literature | www.shu.ac.uk/1002 |
| Environment | | |
| BSc (Hons) | Environmental Science | www.shu.ac.uk/714 |
| Food and nutrition | | |
| BSc (Hons) | Food and Nutrition | www.shu.ac.uk/636 |
| BSc (Hons) | Food and Nutrition (top up) | www.shu.ac.uk/920 |
| BSc (Hons) | Food Marketing Management | www.shu.ac.uk/642 |
| BSc (Hons) | Food Marketing Management (top up) | www.shu.ac.uk/919 |
| BSc (Hons) | Nutrition and Public Health | www.shu.ac.uk/771 |
| BSc (Hons) | Nutrition, Diet and Lifestyle | www.shu.ac.uk/635 |
| Geography | | |
| BSc (Hons) | Geography | www.shu.ac.uk/637 |
| BA (Hons) | Human Geography | www.shu.ac.uk/790 |
| History | | |
| BA (Hons) | History | www.shu.ac.uk/521 |
| Languages | | |
| BA (Hons) | Languages with International Business (French) | www.shu.ac.uk/1213 |
| BA (Hons) | Languages with International Business (German) | www.shu.ac.uk/1214 |

| Languages continued | | |
|--------------------------|---|--|
| Qualification | Course | Web address |
| BA (Hons) | Languages with International Business (Spanish) | www.shu.ac.uk/1215 |
| BA (Hons) | Languages with TESOL (French) | www.shu.ac.uk/984 |
| BA (Hons) | Languages with TESOL (German) | www.shu.ac.uk/1230 |
| BA (Hons) | Languages with TESOL (Spanish) | www.shu.ac.uk/1231 |
| BA (Hons) | Languages with Tourism (French) | www.shu.ac.uk/1219 |
| BA (Hons) | Languages with Tourism (German) | www.shu.ac.uk/1220 |
| BA (Hons) | Languages with Tourism (Spanish) | www.shu.ac.uk/1221 |
| Law | | |
| LLB (Hons) | Law | www.shu.ac.uk/624 |
| LLB (Hons) | Law with Criminology | www.shu.ac.uk/598 |
| Mathematics | | |
| BSc (Hons) | Mathematics | www.shu.ac.uk/745 |
| BSc (Hons) | Physics | www.shu.ac.uk/1362 |
| Media arts | | |
| BA (Hons) | Animation | www.shu.ac.uk/539 |
| MArt | Animation | www.shu.ac.uk/985 |
| BA (Hons) | Digital Media Production | www.shu.ac.uk/526 |
| MArt | Digital Media Production | www.shu.ac.uk/1004 |
| BA (Hons) | Film and Media Production | www.shu.ac.uk/535 |
| BA (Hons) | Games Design | www.shu.ac.uk/502 |
| BA (Hons) | Photography | www.shu.ac.uk/792 |
| Media, PR and journalism | | |
| BA (Hons) | Journalism | www.shu.ac.uk/542 |
| BA (Hons) | Media | www.shu.ac.uk/765 |
| BA (Hons) | Public Relations | www.shu.ac.uk/876 |
| BA (Hons) | Public Relations and Media | www.shu.ac.uk/686 |

Nursing and midwifery

| Qualification | Course | Web address |
|---------------|--|--|
| BSc (Hons) | Applied Nursing Work (Learning Disability) and Generic Social Work | www.shu.ac.uk/518 |
| BSc (Hons) | Midwifery | www.shu.ac.uk/713 |
| BSc (Hons) | Nursing (Adult) | www.shu.ac.uk/1179 |
| BSc (Hons) | Nursing (Child) | www.shu.ac.uk/1210 |
| BSc (Hons) | Nursing (Mental Health) | www.shu.ac.uk/1211 |

Occupational therapy

| | | |
|------------|----------------------|--|
| BSc (Hons) | Occupational Therapy | www.shu.ac.uk/734 |
|------------|----------------------|--|

Operating Department Practice

| | | |
|------------|-------------------------------|--|
| BSc (Hons) | Operating Department Practice | www.shu.ac.uk/599 |
|------------|-------------------------------|--|

Paramedic Practice

| | | |
|------------|-------------------|--|
| BSc (Hons) | Paramedic Science | www.shu.ac.uk/625 |
|------------|-------------------|--|

Physiotherapy

| | | |
|------------|---------------|--|
| BSc (Hons) | Physiotherapy | www.shu.ac.uk/628 |
|------------|---------------|--|

Psychology

| | | |
|------------|------------|--|
| BSc (Hons) | Psychology | www.shu.ac.uk/722 |
|------------|------------|--|

Radiotherapy and oncology

| | | |
|------------|---------------------------|--|
| BSc (Hons) | Radiotherapy and Oncology | www.shu.ac.uk/751 |
|------------|---------------------------|--|

Real estate

| | | |
|------------|---------------------------------------|--|
| BSc (Hons) | Business Property Management (top up) | www.shu.ac.uk/1268 |
| BSc (Hons) | Real Estate | www.shu.ac.uk/1088 |
| BSc (Hons) | Real Estate Management (top up) | www.shu.ac.uk/1320 |

Social work

| Qualification | Course | Web address |
|---------------|---|--|
| BA (Hons) | Social Work | www.shu.ac.uk/623 |
| BA (Hons) | Working with Children, Young People and Families (top up) | www.shu.ac.uk/1302 |

Sociology and politics

| | | |
|-----------|------------------------|--|
| BA (Hons) | Applied Social Science | www.shu.ac.uk/758 |
| BA (Hons) | Politics | www.shu.ac.uk/780 |
| BA (Hons) | Sociology | www.shu.ac.uk/759 |

Sport and active lifestyles

| | | |
|------------|-------------------------------------|--|
| BSc (Hons) | Physical Activity, Sport and Health | www.shu.ac.uk/1261 |
| BSc (Hons) | Physical Education and School Sport | www.shu.ac.uk/739 |
| BSc (Hons) | Sport and Exercise Science | www.shu.ac.uk/746 |
| BSc (Hons) | Sport and Exercise Technology | www.shu.ac.uk/1391 |
| BSc (Hons) | Sport Business Management | www.shu.ac.uk/787 |
| BSc (Hons) | Sport Coaching | www.shu.ac.uk/776 |
| BSc (Hons) | Sport Development with Coaching | www.shu.ac.uk/741 |
| BA (Hons) | Sport Studies | www.shu.ac.uk/798 |

Stage and screen

| | | |
|-----------|--|--|
| BA (Hons) | Film Studies | www.shu.ac.uk/764 |
| BA (Hons) | Film Studies and Screenwriting | www.shu.ac.uk/903 |
| BA (Hons) | Performance and Professional Practice (top up) | www.shu.ac.uk/507 |
| BA (Hons) | Performance for Stage and Screen | www.shu.ac.uk/909 |

| Teacher education | | |
|-------------------|--|--|
| Qualification | Course | Web address |
| BA (Hons) | Early Years and Primary Education (3-7) with QTS | www.shu.ac.uk/546 |
| CertHE | Mathematics Education | www.shu.ac.uk/1314 |
| BSc (Hons) | Mathematics with Education and QTS | www.shu.ac.uk/549 |
| BA (Hons) | Primary Education (5-11) with QTS | www.shu.ac.uk/555 |
| BSc (Hons) | Science with Education and QTS | www.shu.ac.uk/550 |

| Tourism, hospitality and events | | |
|---------------------------------|--|--|
| BSc (Hons) | Events and Leisure Management (top up) | www.shu.ac.uk/914 |
| BSc (Hons) | International Events Management | www.shu.ac.uk/648 |
| BSc (Hons) | International Events Management (top up) | www.shu.ac.uk/918 |
| BSc (Hons) | International Events Management with Arts and Entertainment | www.shu.ac.uk/647 |
| BSc (Hons) | International Events Management with Arts and Entertainment (top up) | www.shu.ac.uk/916 |
| BSc (Hons) | International Events Management with Experiential Marketing | www.shu.ac.uk/1357 |
| BSc (Hons) | International Events Management with Tourism | www.shu.ac.uk/650 |
| BSc (Hons) | International Events Management with Tourism (top up) | www.shu.ac.uk/917 |
| BSc (Hons) | International Hospitality Business Management | www.shu.ac.uk/770 |
| BSc (Hons) | International Hospitality Business Management (top up) | www.shu.ac.uk/925 |
| BSc (Hons) | International Hospitality Business Management with Conference and Events | www.shu.ac.uk/728 |

| Tourism, hospitality and events continued | | |
|---|---|--|
| Qualification | Course | Web address |
| BSc (Hons) | International Hospitality Business Management with Conference and Events (top up) | www.shu.ac.uk/921 |
| BSc (Hons) | International Hospitality Business Management with Culinary Arts | www.shu.ac.uk/643 |
| BSc (Hons) | International Hospitality Business Management with Culinary Arts (top up) | www.shu.ac.uk/924 |
| BSc (Hons) | International Hotel and Resort Management | www.shu.ac.uk/736 |
| BSc (Hons) | International Hotel and Resort Management (top up) | www.shu.ac.uk/926 |
| BSc (Hons) | International Tourism and Hospitality Business Management | www.shu.ac.uk/769 |
| BSc (Hons) | International Tourism and Hospitality Business Management (top up) | www.shu.ac.uk/913 |
| BSc (Hons) | International Tourism Management | www.shu.ac.uk/646 |
| BSc (Hons) | International Tourism Management (top up) | www.shu.ac.uk/928 |
| BA (Hons) | International Tourism Management with French | www.shu.ac.uk/1399 |
| BA (Hons) | International Tourism Management with German | www.shu.ac.uk/1400 |
| BA (Hons) | International Tourism Management with Spanish | www.shu.ac.uk/1401 |

POSTGRADUATE

Accounting, banking and finance

| Qualification | Course | Web address |
|---------------|--|--|
| MSc | Accounting and Finance | www.shu.ac.uk/300 |
| MSc | Accounting and Finance – ACCA Fast Track Route | www.shu.ac.uk/1206 |
| MSc | Banking and Finance | www.shu.ac.uk/317 |
| MSc | Finance and Investment | www.shu.ac.uk/1085 |
| MSc | Financial Management | www.shu.ac.uk/347 |
| MSc | Financial Management – CIMA Fast Track Route | www.shu.ac.uk/1205 |
| MSc | Forensic Accounting | www.shu.ac.uk/104 |
| MSc | Wealth Management | www.shu.ac.uk/1367 |

Architecture

| | | |
|-------|------------------------|--|
| MArch | Architecture | www.shu.ac.uk/1259 |
| MSc | Technical Architecture | www.shu.ac.uk/438 |

Art and design

| | | |
|--------|--------------------------------------|--|
| MA/MFA | Design (Fashion) | www.shu.ac.uk/1256 |
| MA/MFA | Design (Graphics) | www.shu.ac.uk/229 |
| MA/MFA | Design (Illustration) | www.shu.ac.uk/1257 |
| MA/MFA | Design (Interaction) | www.shu.ac.uk/1410 |
| MA/MFA | Design (Interior) | www.shu.ac.uk/1254 |
| MA/MFA | Design (Jewellery and Metalwork) | www.shu.ac.uk/135 |
| MA/MFA | Design (Packaging) | www.shu.ac.uk/124 |
| MA/MFA | Design (Product) | www.shu.ac.uk/134 |
| MA | Fashion Management and Communication | www.shu.ac.uk/1326 |
| MA/MFA | Fine Art | www.shu.ac.uk/136 |

Biosciences and chemistry

| Qualification | Course | Web address |
|-------------------|--------------------------------|--|
| MSc/PgDip /PgCert | Analytical Chemistry | www.shu.ac.uk/1083 |
| MSc/PgDip /PgCert | Biomedical Laboratory Sciences | www.shu.ac.uk/1111 |
| MSc/PgDip /PgCert | Biomedical Sciences | www.shu.ac.uk/1087 |
| MSc/PgDip /PgCert | Biotechnology | www.shu.ac.uk/1082 |
| MSc/PgDip /PgCert | Molecular and Cell Biology | www.shu.ac.uk/1080 |
| MSc/PgDip /PgCert | Pharmaceutical Analysis | www.shu.ac.uk/465 |
| MSc/PgDip /PgCert | Pharmacology and Biotechnology | www.shu.ac.uk/387 |

Business and management

| | | |
|-------------------|---|--|
| MRes | Business | www.shu.ac.uk/214 |
| Doctorate | Business Administration | www.shu.ac.uk/431 |
| PhD | Business and Management Programme | www.shu.ac.uk/330 |
| MSc/PgDip /PgCert | Coaching and Mentoring | www.shu.ac.uk/353 |
| MBA | Executive MBA | www.shu.ac.uk/1283 |
| MBA | Executive MBA (Built Environment) | www.shu.ac.uk/1287 |
| MBA | Executive MBA (Facilities Management) | www.shu.ac.uk/356 |
| MBA | Executive MBA (Psychology) | www.shu.ac.uk/1286 |
| MSc | Human Resource Management | www.shu.ac.uk/315 |
| MSc | International Business Management | www.shu.ac.uk/334 |
| MSc | International Human Resource Management | www.shu.ac.uk/823 |
| MSc | International Marketing | www.shu.ac.uk/335 |

Business and management continued

| Qualification | Course | Web address |
|-------------------|--|--|
| MSc | Logistics and Supply Chain Management | www.shu.ac.uk/467 |
| MSc | Managing Global Business | www.shu.ac.uk/329 |
| MBA | MBA | www.shu.ac.uk/1282 |
| MSc/PgDip /PgCert | Total Quality Management and Organisational Excellence | www.shu.ac.uk/121 |

Computing

| | | |
|------|---|--|
| MSc | Advanced Computer Networks | www.shu.ac.uk/1347 |
| MSc | Big Data Analytics | www.shu.ac.uk/1250 |
| MSc | Computing | www.shu.ac.uk/1329 |
| MRes | Computing (Enterprise Systems, Transformation and Innovation) | www.shu.ac.uk/1404 |
| MSc | Games Software Development | www.shu.ac.uk/131 |
| MSc | Information Systems Security | www.shu.ac.uk/432 |
| MSc | Information Technology Management | www.shu.ac.uk/442 |

Construction, building and surveying

| | | |
|-----|---------------------------------|--|
| MSc | Building Surveying | www.shu.ac.uk/1112 |
| MSc | Construction Project Management | www.shu.ac.uk/1116 |
| MSc | Quantity Surveying | www.shu.ac.uk/1117 |

Diagnostic radiography

| | | |
|-------------------|------------------------------|--|
| MSc/PgDip /PgCert | Diagnostic Imaging | www.shu.ac.uk/1348 |
| MSc/PgDip /PgCert | Medical Ultrasound Programme | www.shu.ac.uk/276 |

Education studies

| Qualification | Course | Web address |
|------------------|------------------------------|--|
| PgCert | Autism and Asperger Syndrome | www.shu.ac.uk/259 |
| MA/PgDip /PgCert | Autism Spectrum | www.shu.ac.uk/201 |
| Doctorate | Education | www.shu.ac.uk/215 |

Engineering

| | | |
|-----|--|--|
| MSc | Advanced Engineering | www.shu.ac.uk/392 |
| MSc | Advanced Engineering and Management | www.shu.ac.uk/482 |
| MSc | Advanced Materials Engineering | www.shu.ac.uk/483 |
| MSc | Advanced Mechanical Engineering | www.shu.ac.uk/144 |
| MSc | Automation, Control and Robotics | www.shu.ac.uk/1158 |
| MSc | Computer and Network Engineering | www.shu.ac.uk/391 |
| MSc | Electrical and Electronic Engineering | www.shu.ac.uk/1381 |
| MSc | Food Processing Engineering | www.shu.ac.uk/1402 |
| MBA | Industrial Management | www.shu.ac.uk/396 |
| MSc | Mechanical Engineering | www.shu.ac.uk/1382 |
| MSc | Telecommunication and Electronic Engineering | www.shu.ac.uk/970 |

English

| | | |
|----|---------------------|--|
| MA | Creative Writing | www.shu.ac.uk/137 |
| MA | English by Research | www.shu.ac.uk/1203 |

Environment

| | | |
|-------------------|--------------------------|--|
| MSc/PgDip /PgCert | Environmental Management | www.shu.ac.uk/145 |
|-------------------|--------------------------|--|

Food and nutrition

| Qualification | Course | Web address |
|---------------|---|--|
| MSc | Food and Nutrition Sciences | www.shu.ac.uk/1411 |
| MSc | Food Consumer Marketing and Product Development | www.shu.ac.uk/1189 |
| MSc | Nutrition with Public Health Management | www.shu.ac.uk/822 |

Geography

| | | |
|-----|----------------------------------|--|
| MSc | Geographical Information Systems | www.shu.ac.uk/139 |
|-----|----------------------------------|--|

Health and social care management

| | | |
|-------------------|---------------------------------|--|
| MSc | Public Health | www.shu.ac.uk/415 |
| MSc/PgDip /PgCert | Advancing Professional Practice | www.shu.ac.uk/837 |

History

| | | |
|----|---------------------|--|
| MA | History by Research | www.shu.ac.uk/1337 |
|----|---------------------|--|

Law

| | | |
|-------------------|--------------------------------------|--|
| MA | Applied Human Rights | www.shu.ac.uk/1292 |
| LLM | Applied Human Rights | www.shu.ac.uk/1390 |
| LLM/PgDip /PgCert | International Commercial Law | www.shu.ac.uk/1364 |
| LLM | International Sports Law in Practice | www.shu.ac.uk/1376 |
| LLM | Masters in Law by Research | www.shu.ac.uk/1028 |

Media arts

| | | |
|----|-------------------------------|--|
| MA | Animation and Digital Effects | www.shu.ac.uk/961 |
| MA | Digital Media Management | www.shu.ac.uk/1377 |
| MA | Filmmaking | www.shu.ac.uk/1336 |
| MA | Games Design | www.shu.ac.uk/1365 |

Media, PR and journalism

| Qualification | Course | Web address |
|---------------|---|--|
| MA | Arts and Cultural Management | www.shu.ac.uk/138 |
| MA | International Journalism | www.shu.ac.uk/1289 |
| MA | Journalism | www.shu.ac.uk/1290 |
| MA | Public Relations | www.shu.ac.uk/383 |
| MPhil/PhD | Research Degrees – Cultural, Communication and Computing Research Institute | www.shu.ac.uk/190 |
| MA | Sports Journalism | www.shu.ac.uk/162 |

Nursing and midwifery

| | | |
|-------------------|--|--|
| PgCert | Acute and Critical Care of the Child | www.shu.ac.uk/1378 |
| MSc/PgDip /PgCert | Advanced Clinical Practice | www.shu.ac.uk/1383 |
| PgCert | Child, Adolescent and Family Mental Health | www.shu.ac.uk/1385 |
| MSc/PgDip /PgCert | Healthcare Education | www.shu.ac.uk/868 |
| MSc | Nursing (Adult) | www.shu.ac.uk/195 |
| MSc | Nursing (Child) | www.shu.ac.uk/1372 |
| MSc | Nursing (Mental Health) | www.shu.ac.uk/1373 |
| MSc | Nursing (Public Health) | www.shu.ac.uk/1140 |
| MSc | Nursing Studies (top up) | www.shu.ac.uk/1171 |
| PgCert | Perinatal and Maternal Mental Health | www.shu.ac.uk/1384 |
| MSc/PgDip | Specialist Practice District Nursing | www.shu.ac.uk/1138 |

Occupational therapy

| | | |
|--------|---|--|
| MSc | Occupational Therapy (pre-registration) | www.shu.ac.uk/304 |
| PgCert | Vocational Rehabilitation | www.shu.ac.uk/285 |

| Physiotherapy | | |
|---------------|----------------------------------|--|
| Qualification | Course | Web address |
| MSc | Advancing Physiotherapy Practice | www.shu.ac.uk/1298 |
| MSc | Manual Therapy | www.shu.ac.uk/1297 |
| MSc | Physiotherapy (Pre Registration) | www.shu.ac.uk/1375 |

| Planning, housing and regeneration | | |
|------------------------------------|--------------------|--|
| MSc | Urban Planning | www.shu.ac.uk/435 |
| MSc | Urban Regeneration | www.shu.ac.uk/450 |

| Psychology | | |
|------------|---------------------------------|--|
| MSc | Clinical Cognitive Neuroscience | www.shu.ac.uk/814 |
| MSc | Developmental Psychology | www.shu.ac.uk/835 |
| MSc | Forensic Psychology | www.shu.ac.uk/423 |
| MSc | Health Psychology | www.shu.ac.uk/166 |
| MSc | Psychology | www.shu.ac.uk/419 |
| MSc | Sport and Exercise Psychology | www.shu.ac.uk/960 |

| Radiotherapy and oncology | | |
|---------------------------|---|--|
| MSc | Radiotherapy and Oncology in Practice | www.shu.ac.uk/160 |
| MSc/PgDip /PgCert | Advanced Practice (Radiotherapy and Oncology) | www.shu.ac.uk/107 |
| MSc/PgDip /PgCert | Radiotherapy and Oncology | www.shu.ac.uk/273 |
| MSc/PgDip /PgCert | Supportive and Palliative Care | www.shu.ac.uk/859 |
| MSc/PgDip /PgCert | Radiotherapy Planning | www.shu.ac.uk/1039 |
| MSc/PgDip PgCert | Prostate Cancer Care | www.shu.ac.uk/1308/ |

| Real estate | | |
|---------------|-------------|--|
| Qualification | Course | Web address |
| MSc | Real Estate | www.shu.ac.uk/359 |

| Social work | | |
|-------------|-------------|--|
| MSW | Social Work | www.shu.ac.uk/470 |

| Sociology and politics | | |
|------------------------|----------------|--|
| MRes | Social Science | www.shu.ac.uk/110 |

| Sport and active lifestyles | | |
|-----------------------------|------------------------------------|--|
| MSc/PgDip /PgCert | Applied Sport and Exercise Science | www.shu.ac.uk/284 |
| MSc/PgDip /PgCert | Sport Business Management | www.shu.ac.uk/302 |
| MSc | Sports Engineering | www.shu.ac.uk/900 |
| MSc/PgDip | Advanced Sport Coaching Practice | www.shu.ac.uk/1317 |

| Teacher education | | |
|-------------------|--|--|
| PGCE | Early Childhood Education and Care (0-5) with EYTS (graduate employment route) | www.shu.ac.uk/1279 |
| PGCE | Early Childhood Education and Care (0-5) with EYTS (graduate entry route) | www.shu.ac.uk/1342 |
| PGCE | Early Years and Primary Education (3-7) with QTS | www.shu.ac.uk/192 |
| MA | Education | www.shu.ac.uk/1115 |
| PGCE | Engineering | www.shu.ac.uk/129 |
| PgCert | Learning and Teaching in Higher Education | www.shu.ac.uk/228 |
| PGCE | Post-16 and Further Education | www.shu.ac.uk/819 |
| PGCE | Post-16 and Further Education (Special Educational Needs) | www.shu.ac.uk/1315 |

| Teacher education continued | | |
|-----------------------------|---|--|
| Qualification | Course | Web address |
| PGCE | Primary (5-11) PE Specialist with QTS | www.shu.ac.uk/1340 |
| PGCE | Primary Education (5-11) With QTS | www.shu.ac.uk/193 |
| PGCE | Secondary Art and Design | www.shu.ac.uk/1403 |
| PGCE | Secondary Business Education | www.shu.ac.uk/204 |
| PGCE | Secondary Citizenship | www.shu.ac.uk/389 |
| PGCE | Secondary Computing | www.shu.ac.uk/207 |
| PGCE | Secondary Design and Technology | www.shu.ac.uk/205 |
| PGCE | Secondary Design and Technology (Food Technology) | www.shu.ac.uk/198 |
| PGCE | Secondary Design and Technology (Textiles) | www.shu.ac.uk/153 |
| PGCE | Secondary English | www.shu.ac.uk/206 |
| PGCE | Secondary Geography | www.shu.ac.uk/1273 |
| PGCE | Secondary History | www.shu.ac.uk/1274 |
| PGCE | Secondary Mathematics | www.shu.ac.uk/208 |
| PGCE | Secondary Modern Foreign Languages | www.shu.ac.uk/209 |
| PGCE | Secondary Physical Education | www.shu.ac.uk/237 |
| PGCE | Secondary Religious Education | www.shu.ac.uk/210 |
| PGCE | Secondary Science (Biology) | www.shu.ac.uk/1095 |
| PGCE | Secondary Science (Chemistry) | www.shu.ac.uk/1094 |
| PGCE | Secondary Science (Physics) | www.shu.ac.uk/1092 |
| PgCert | Special Educational Needs Coordination | www.shu.ac.uk/1174 |
| PgCert | Teaching English for Academic Purposes (TEAP) | www.shu.ac.uk/395 |
| MA | Teaching English to Speakers of Other Languages (TESOL) | www.shu.ac.uk/1300 |
| MA | Teaching English to Speakers of Other Languages (TESOL) | www.shu.ac.uk/1301 |

| Tourism, hospitality and events | | |
|---------------------------------|--|--|
| Qualification | Course | Web address |
| MSc | International Events and Conference Management | www.shu.ac.uk/839 |
| MSc | International Hospitality and Tourism Management | www.shu.ac.uk/316 |
| MSc | International Hospitality Management | www.shu.ac.uk/294 |
| MSc | International Tourism Management | www.shu.ac.uk/298 |

Checklist



- Find the right course for you at
shu.ac.uk/prospectus
 - Find out about the scholarships we offer at
shu.ac.uk/scholarships
 - Check the entry requirements for your country at
shu.ac.uk/international/entry-requirements
 - Follow the steps to complete your application form at
shu.ac.uk/international/how-to-apply
- 
- 

Find out more

Phone +44(0)114 225 5555

shu.ac.uk/international

Sheffield Office

international@shu.ac.uk

South Asia Office

india@shu.ac.uk

or southasia@shu.ac.uk

China Office

beijing@shu-china.cn

Pakistan Office

pakistan@shu.ac.uk

South East Asia Office

seaooffice@shu.ac.uk

Nigeria Office

africa@shu.ac.uk

Our representative in Russia

SHUniRussia@gmail.com

Connect with us

 Facebook

facebook.com/SheffieldHallamUniversityInternational

 Twitter

[@SHUoverseas](https://twitter.com/SHUoverseas)

A person wearing an orange beanie, a blue and orange cycling jacket, blue shorts, and orange shoes with black and orange socks stands on a dirt path in a forest. They are holding a black road bike. The path is surrounded by green foliage and trees, with a misty or foggy atmosphere in the background.

**Sheffield
Hallam
University**

STUDY DISCOVER EXPLORE

A guide for international students

www.shu.ac.uk/international