



INSPIRATIONAL TUTORS

Tourism ranked top in the UK for satisfaction with teaching
(*The Guardian University league tables 2018*)



INVESTING IN YOU

UK's no.1 for spend per student in Business, Management and Finance
(*The Guardian University league tables 2018*)



University of
Sunderland
in London

PROSPECTUS 2019

CHANGE IS IN YOUR HANDS



PROSPECTUS 2019



University of
Sunderland
in London

FIND YOUR LIFE-CHANGING FUTURE-SHAPING CAREER-DEFINING HORIZON-SHIFTING MOMENT

YOUR MOMENT HAS ARRIVED

You're thinking of studying at the University of Sunderland in London. This could be a life-changing decision. Our London facility combines the best of our famously-friendly academic support with all that the capital has to offer.

As well as our full list of courses, we'll tell you everything you need to know about our first-class facilities, fantastic location and support networks – plus all the amazing things going on in our capital city.

This is a University that's bursting with opportunity. So wherever you're coming from, and wherever you want to go, this could be the moment it all falls into place.

READY TO APPLY?

Go to london.sunderland.ac.uk, search for your course and click 'Apply Now'. Our institution's UCAS code is **S84**.

TO FIND OUT MORE

+44 (0)20 7531 7333

Email: recruitment-london@sunderland.ac.uk



A WORLD-CLASS CHOICE

LONDON NO.1
STUDENT CITY 2018

(QS Best Student Cities 2018)



THE HEART OF THE CITY

We overlook Canary Wharf,
Europe's most important
financial centre



LEAVE US CAREER-READY

We've been awarded the TEF Silver
Award in high-quality teaching



COURSES THAT FIT YOUR LIFE

Flexible start dates in January,
April, August and October



BETTER CARING

Nursing ranked top five in the UK
*(The Guardian University
league tables 2018)*

CONTENTS

This is London	07
Our University	18
A Global University	20
Our History	22
Student Life	24
Our Courses	30
MBA	31
Business Management and Finance	35
Tourism	39
Nursing	43
Entry Requirements	47
Studying in the UK	49
Our Locations	50



THE MOMENT YOU

STEP UP TO THE CHALLENGE
START TO BELIEVE
REALISE YOUR POTENTIAL
DISCOVER YOUR SPARK

The University of Sunderland – in London. It's a unique mix of the friendliness and flexibility of our vibrant Northern city, but all within a stone's throw of Canary Wharf, the heartbeat of the world of business and finance. This exclusive combination is one that few people get to experience. And those that do, relish it. This is the moment you'll always remember. Where everything is yours to achieve.

A BRIEF HISTORY OF WHY


The University of Sunderland has forged its reputation. Not just for preparing students with well-rounded CVs, but for enabling them to get fully-fledged careers. We do it by working with global organisations like the London Stock Exchange and the Marriott Hotel. And by helping you fit your course around your life. We're here to help you discover: your course, your future, your potential.

WHAT IS NOW
PROVEN
WAS ONCE
IMAGINED

THIS IS LONDON OPPORTUNITY IS EVERYWHERE

As a world city, London needs little introduction. Whether you've lived here all your life, or are visiting for the very first time, this is a place where opportunities lie. From its unrivalled history, to the huge number of cultural attractions at your doorstep, it's easy to see why people choose to study in England's capital. With London as your base, this is your chance to not only get a top quality UK education, but also to build up the business and personal links that you'll carry with you for the rest of your life.





STUDYING IN LONDON

BEST FOR STUDENTS

London has been voted the best student city in the world (QS Best Student Cities 2018).

FIND PART-TIME WORK

Finding flexible part-time work is a must for many students who also have to juggle other things – such as life! London's huge retail and leisure sectors present perfect opportunities for many of our students.

BIG FOR BUSINESS

Over 50% of the UK's top 100 companies and over 20% of Europe's 500 largest companies are based in London.

Inspirational location

Overlooking Canary Wharf, London's iconic business district.



Something for everyone

From history, to culture, to food and entertainment, there is always something new to discover.

CONNECT AND LEARN

London businesses can offer work experience, networking events and interview training. Every day is a chance to connect with new people from around the world.

GO FURTHER

London offers outstanding transport links. Plus you can easily explore the UK and Europe whilst you're here.



ENTERTAINMENT AWAITS

To put it simply, there is no better place to kick back than in London. This is a truly cosmopolitan metropolis. One with any number of restaurants, cinemas and music venues all within walking distance of the nearest Underground stop.

Take your pick from the British Museum and Tate Modern art gallery, or the National Portrait Gallery and Victoria & Albert Museum. All world-renowned, all completely free.

World-class culture

London offers an incredible selection of galleries featuring classic to modern art.



It wouldn't be London without mentioning the famous West End – home to England's theatre scene and your chance to see some of the best actors to ever tread the boards. From long-running musicals to exciting new plays, this is where you can get your fix of live performance at its best.

Play hard

London's West End is famous as the city's entertainment district.

ON STAGE ON DEMAND



Park life

Enjoy the capital's glorious green spaces.

SPACE TO THINK



You might not think that such a busy, vibrant place has many green, open spaces. But you'd be wrong... London's parks are the perfect place to relax. Try the spectacular Hyde Park, Regent's Park and St James' Park – all in the centre of London. Or Royal Richmond Park, Bushy Park and Hampstead Heath, all just a short travelling distance away. These are the city's green spaces where you can often find open-air theatre, concerts and sporting events – many of which are also free.



Hyde Park

Olympic Park

There's plenty to do in the iconic home of the 2012 Olympic games.



LONDON CAN COMPETE WITH ANYWHERE

Think London, think sport. The hugely successful 2012 Olympics might've showcased the best of what our capital city can offer, but in truth, it already had claim to many premier events. From football at Wembley Stadium, Arsenal, Chelsea, Spurs and West Ham, to tennis at Wimbledon, rugby at Twickenham and cricket at Lord's.

First-class events

At the national stadium, Wembley

**Get energised**

With fun sports and activities



FLEX YOUR BODY FEED YOUR MIND

London Sport aims to get one million people active by 2020 as part of the legacy of the 2012 Olympic and Paralympics games.

As part of the initiative, the not-for-profit organisation will invest over £5.5 million per year into supporting physical activities. This includes:

- Putting over £5.5million a year into sports projects across London
- Sharing expertise and key insights on physical activity habits gained from delivering sports programmes in the capital
- Seeking further support from public and private sectors to boost funding for London Sport to pass on to grassroots activities in London

For more details, visit londonsport.org



SHOP 'TIL YOU DROP

Head to Harrods? Check out Covent Garden? Wander around Westfield? London offers so many places to shop, it can be hard knowing where to start. Whether it's luxury goods or quirky gifts, even the most demanding of shoppers will struggle to get tired of places like Carnaby Street, Notting Hill, Borough Market and Savile Row. And best of all, Oxford Street is just a short tube ride away from where you'll study. Quick trip out at lunchtime, anyone?



London Eye



DON'T JUST SEE, EXPERIENCE

Sightseeing is a must if you're new to the city. But it's also something to experience again and again. Go high on the London Eye, travel down history's glorious (and goriest) past at the Tower of London, strike a chord at Big Ben. From Kew Gardens and Buckingham Palace to Madame Tussauds and the Royal Albert Hall, this is where London really comes into its own.

Trafalgar Square

Surrounded by museums, galleries, cultural spaces and historic buildings.



GETTING HERE

Getting to London isn't hard (there are many ways to do it), and once you're here you may never want to leave – many students end up making it their home. Plus once you arrive, getting around is easy. There's the famous London Underground (Tube), Overground services, plus many bus routes, cycle routes and public footpaths.



South Quay DLR station is just 2 minutes walk from the University.

AIR

London is accessible by several airports. Heathrow is one of the world's busiest. With four passenger terminals, it is Britain's main airport for international flights. Gatwick is widely regarded as London's second airport for international flights, whereas Stansted mainly serves European destinations.

HEATHROW AIRPORT
heathrowairport.com

GATWICK AIRPORT
gatwickairport.com

STANSTED AIRPORT
stanstedairport.com

RAIL

London is served by several national rail routes, with timetables and fares of the private train-operating companies found at National Rail. Eurostar is a high-speed passenger rail service linking London St Pancras International with Paris, Brussels and Lille, with up to 19 daily departures.

NATIONAL RAIL
nationalrail.co.uk

EUROSTAR
eurostar.com

COACH

Coaches pull into the four different London coach stations – Golders Green, Liverpool St, Stratford and Victoria – several times a day, from all over the UK. It's easy to get a seat on a coach to London, and often cheaper than travelling by train.

NATIONAL EXPRESS
nationalexpress.com

GETTING AROUND



There are fantastic transport links right next to our University which make the entire capital accessible.

DISCOUNTS FOR LONDON STUDENTS

Students living in London can take advantage of the 18+ Student Oyster card, which entitles you to get 30% off weekly, monthly and longer period Travelcards.

You can also get a 34% discount on off-peak pay as you go fares and off-peak daily caps on the Tube, DLR and London Overground if you get a 16-25 National Railcard and add the discount entitlement to your 18+ Student Oyster photocard.

You can find out more about travelling in London from the University's friendly team at The Gateway.



Well connected

With great transport links, London is easy to get around.



LIFE AT UNIVERSITY

Your student life is about discovery.
We're here to help you every step of the way...

From student support services to modern facilities, we aim to make learning with us an enjoyable experience. With many of the corporate giants nearby, our location in London's business district provides genuine inspiration. This is an environment geared-up for life-changing moments. You just have to grasp it.

Our London location offers courses in business, management and finance, tourism, nursing and health and English for Academic Purposes to the UK, European and International students.

MODERN FACILITIES. MODERN THINKING.

At the University of Sunderland in London, you'll be part of a well-established academic community, with modern facilities designed so you can make your mark. As well as our knowledgeable support staff, you'll find a library

with over 10,000 print books and 12,000 electronic books, journals and subject-specific databases at your disposal and group and individual study areas. Plus all the technology you'd expect – a suite of computers, free Wi-Fi, printing, scanning and photocopying on-site.



YOUR HOME FROM HOME

If you're moving to London to study, you need to think about accommodation. The University of Sunderland in London does not have its own halls of residence, but there are many student properties a short distance away. Try using these websites to help you find the accommodation that meets your budget and needs:

student.com

ish.org.uk

studentblock.co.uk

Alternatively, consider a private rental or house/flat share. For more details download our accommodation guide at:

london.sunderland.ac.uk

livingstudyinginlondon/accommodation



"I heard about the University online and I came because Sunderland has a great location in the heart of London's business district. I have gained a lot of experience including meeting new people from different parts of the world, new ways of learning and understanding how to become a better leader."

EMMANUEL ANAZIA,
MSC FINANCE AND MANAGEMENT

A GLOBAL UNIVERSITY



AROUND THE WORLD

We work with over 18 educational partners around the world to deliver our courses to more than 7,000 students in a huge range of countries including Malaysia, Singapore, Trinidad and Tobago, and Kenya.

OUR REPUTATION EXTENDS WELL BEYOND THE NORTH EAST OF ENGLAND

As one of the largest recruiters of overseas students in the UK, you'll be learning alongside students from over 100 countries. The same high-quality courses we offer in London have been delivered across the world for decades – and this global view will be a critical element of your degree.

SUNDERLAND

Sunderland is a large coastal city in the beautiful North East of England. We have two campuses there, with a wide range of undergraduate and postgraduate courses across many subject areas.

[Go to sunderland.ac.uk](http://Go.to.sunderland.ac.uk)

HONG KONG

With a substantial track record of educating students from Asia, our links with our Asian alumni are becoming even stronger as we establish a major presence in this hugely influential region. The University of Sunderland's campus in the Central District of Hong Kong firmly places us at the heart of one of the region's most exciting cities, where we deliver a large range of business and tourism courses.

[Go to sunderland.edu.hk](http://Go.to.sunderland.edu.hk)



Central District, Hong Kong

A CENTURY OF LEARNING

We have made huge investments in our global campuses – in addition to the UK locations in Sunderland and London, 2016 saw the opening of the Hong Kong campus in the heart of the vibrant business and financial district.

The University works with some of the world's largest organisations and we have built up strong corporate partnerships with global businesses such as London Marriott Hotel West India Quay, and students also gain experience with organisations like the London Stock Exchange Group.

This ensures the programmes we deliver are industry-focussed and graduates leave with both the academic qualifications and life skills that employers are looking for.

We also enjoy a strong international reputation for the quality of our world-leading research. All of the research we carry out is fed back into the academic process, which means our students are receiving the latest and most relevant information from academics who are leading experts in their subject areas.

In 2014 the University was recognised as one of the country's top five providers of Transnational Education – the delivery of our programmes with partners abroad.

We work with partners across the world in countries including Malaysia, Hong Kong, Singapore, Trinidad and Tobago, Kenya and Vietnam.

As a result, the University has been recognised at the highest level – particularly by Government and the British Council – for its innovative international activity.

Whatever degree you choose, you can be sure that you will be leaving us ready to compete with the best.

OUR HISTORY NEXT CHAPTER MADE BY YOU

When it comes to Higher Education, numbers count. So it's reassuring to know that the University of Sunderland has been a success for over 100 years. We've welcomed students from over 100 different countries into our fold.

From opening our Hong Kong campus in 2016, to increasing our links with global businesses, we've made it our priority to ensure the programmes we deliver are industry-focused – and our graduates leave with the qualifications and life skills that employers seek most.



RENOWNED FOR RESEARCH

Our world-leading research is fed back into the academic process, so our students get the latest and most relevant information from academics who are experts in their fields.

TIME WELL SPENT

We're proud of our history. Here are some of our key developments since the 20th Century.

- 1901** Sunderland Technical College opened
- 1908** Sunderland Teacher Training Centre opened
- 1939** Priestman Building opened, home to the department of Mathematics and Mining
- 1942** Special courses for HM armed forces introduced during Second World War
- 1964** A new complex of buildings opened by HRH Prince Philip
- 1973** Sunderland created the UK's first part time Bachelor of Education programme
- 1982** Sunderland established the UK's first degree course in Glass Design
- 1992** University of Sunderland established after receiving University status
- 1994** Sir Tom Cowie Campus opened, followed by the David Goldman Informatics Centre
- 1998** Oscar-winning film producer Lord Puttnam of Queensgate became our first Chancellor
- 2004** £9m Media Centre opened by Baroness Estelle Morris
- 2008** Olympic athlete Steve Cram MBE named as new Chancellor
- 2009** £12m CitySpace sports facility opens in preparation for the London 2012 Olympics
- 2012** The University announces the University of Sunderland in London
- 2013** National Glass Centre opens after a £2.2m refurbishment
- 2016** Opening of University of Sunderland in Hong Kong, Asia
- 2017** Hope Street Xchange opens – the new centre for enterprise and innovation
- 2018** Successful bid to open a new medical school, with the first students joining in 2019



STUDENT LIFE

HELLO FROM YOUR STUDENTS' UNION!

Student life isn't just about getting the best degree you can. Sometimes it's about the journey as much as the destination. So it's good to know that you've got your Students' Union right by your side. This is more than just making friends with likeminded people. This is a whole support network, helping you to have new experiences and play an active role in University life. And best of all, membership is free!

You're automatically enrolled as soon as you register on your course, so make sure you sign up for the following – just some of what's on offer at your local Students' Union.

- Volunteer
- Representing students on your course
- Getting involved in events and activities
- Find free, independent, confidential advice and support
- Share your views and raise concerns
- Get teamed up with an SU Buddy or become a buddy yourself
- Get involved in campaigns which make real changes to student life
- Gain valuable career skills and experience
- Find funding for the things that matter to you
- Join or start an SU Community and share your passion
- As a student, you will be eligible to purchase an NUS Extra student discount card

CLUBS AND SOCIETIES

As well as the many opportunities to get involved, you can also join societies. Whether cultural, religious, academic or social, these societies are officially sanctioned by the University and you can benefit from exclusive access to trips and events, plus extra support such as subsidised travel.

EVENTS

At the University we're proud to help coordinate social, creative, charitable, cultural and sporting events. From celebrating national and religious holidays, to actively promoting equality, diversity and inclusion, to raising funds for our selected charities, these are events that can make a difference.

GRADUATE ENTREPRENEUR VISA

The University of Sunderland is one of the UK Higher Education Institutions authorised to endorse a number of Tier 1 UK Graduate Entrepreneur Visas per year.

For more information about eligibility, please see: gov.uk/tier-1-graduate-entrepreneurvisa/overview



"I was initially attracted to the University because of the case studies. I could see real examples of how other graduates were putting theory into practice in the competitive job market. The lecturers played an important role in motivating me to keep learning and become the person I am today."

SIDDHARTH NAYAK,
MBA MARKETING BRAND MANAGER,
RW PROMOTIONS PVT LTD., INDIA

DID YOU KNOW

94% of students are in work or continuing study following graduation.
(Destination of Leavers from Higher Education (DLHE) survey 2016)

SUPPORT WHEN YOU NEED IT

THE GATEWAY

This is your main place for advice and support. From finances and accommodation to welfare and visas, our friendly team will deal with your query directly, or put you in touch with others who can.

Email: gateway-london@sunderland.ac.uk

STUDENT ADMIN

The Student Administration team provides extensive support on a wide range of issues. Academic calendars, timetables, assessments, academic regulations, reference requests, transcripts and certificates, you name it.

WELLBEING

Our Student Wellbeing team offers a free and confidential service on issues such as anxiety, substance misuse, domestic violence, sexual health, physical and emotional abuse and healthy eating. There's no problem they can't help with.



MONEY MATTERS

FEES

Full details of our course fees and our financial support can be found on our website. Here are a few things you should know.

- Fees do not have to be paid upfront
- They'll stay the same for the duration of your course
- Your repayments will be linked to your income
- You'll only make repayments if you're earning over £25,000 a year
- Loans and non-repayment grants are available to cover the cost of fees

SCHOLARSHIPS

We know that going to university is a huge financial investment, and we want to help as many people as possible into Higher Education.

That's why we offer a package of scholarships that you don't have to repay. Visit our website to find out what may be available for you. For example, the scholarships offered in 2018 included:

THE 'GET THERE' SCHOLARSHIP

All new full-time UK and EU undergraduate students joining in 2019/20 get £300 worth of travel throughout the TFL system through an allocated Oyster card.

THE OFF-CAMPUS SCHOLARSHIP

A £1,200 fee reduction for each year of study, available for students on a full-time undergraduate franchised programme or at a designated partner college.

THE EXCELLENCE SCHOLARSHIP

A £1,000 cash scholarship for years 1 and 2, available for students who have achieved A Level grades ABB (or equivalent).

DISCRETIONARY SCHOLARSHIPS

We offer three discretionary scholarships following an application and assessment process.

THE STUDY ABROAD SCHOLARSHIP

Students with an annual household income of less than £42,875 can receive up to £1,000 to fund a short international programme in year 2.

THE UNIVERSITY OF SUNDERLAND SCHOLARSHIP

A scholarship in years 1 and 2 worth £1,000 for students with an annual household income of less than £42,875.

THE 'WE CARE' SCHOLARSHIP

Available for Home Care Experienced students or Home Family Estranged students aged 25 or under, this scholarship offers £1,500 for each year of continuous study.

Find out what scholarships you could be eligible for at sunderland.ac.uk/calculator

PREPARING FOR YOUR FUTURE

YOUR CAREER STARTS HERE

Nowadays employers look for more than qualifications. You need professional and practical life skills as much as a healthy-looking CV. Fortunately, our Careers and Employability Service can provide it all. To get you in best shape for finding your ideal job, we offer:

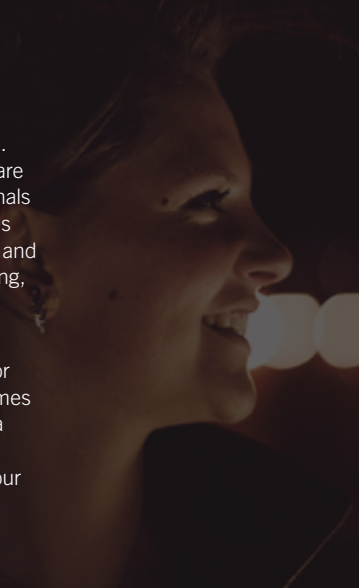
- Impartial one-to-one appointments
- Access to online careers information and resources
- Practical support and feedback with CVs, applications and interviews
- Employability workshops

INDUSTRY INSIGHT

Now you can benefit from the experience of people who've succeeded in your chosen field. Our career-based insight talks are delivered by industry professionals from course-relevant companies and organisation such as Ernst and Young, ACCA, Aspire, The Goring, The Hilton and Team London.

READY TO RISE?

The RISE Award rewards you for actively taking part in programmes and initiatives on campus. It's a great way to gain the skills and experience that will enhance your future employability.





SHORT COURSES NO COSTS

BUSINESS ENTERPRISE

The BEC: Business Enterprise Certificate is a free 12 week programme for students who are interested in learning about enterprise and entrepreneurship. Delivered by an experienced Chartered Marketer and a senior strategic business advisor.

DIGITAL MEDIA MARKETING

Interested in learning about digital and social media? This free six week course will help you gain the practical skills covering SEO, email and mobile marketing, Google analytics and social media strategy, content, research and blogging.

STUDY THE WORLD

FLEXIBLE LOCATIONS AND LEARNING ABROAD

Our student community reaches far and wide and when you are settled you may want to study part of your course or a Summer School at one of our other campus locations in Sunderland, Hong Kong or even further afield. All this is possible through our multi campus mobility programmes, and our Study Abroad and international exchange schemes. We have over 300 exchange partner universities giving you the opportunity to immerse yourself in another culture, develop skills and have one-of-a-kind experiences that will make you stand out to any potential employer. Countries include Australia, Canada, USA, Japan, South Korea and a large selection of European countries.



Study in Australia

IN THEIR WORDS

When travelling to London to stay with a relative already studying at the University, Alina Dobra took the opportunity to visit our location and decided it was the perfect place to study for her MBA. Alina joined us from Romania to pursue her postgraduate studies.



"The University of Sunderland in London has great contacts in industry, and they regularly have guest speakers who are already in management positions. This insight has broadened my learning so that I will be prepared not just for exams but for business life.

"I chose the University because it has a great reputation for Business. This degree will give me more career opportunities.

"As well as the great reputation and well-prepared staff, the University is also located in a very vibrant location in London which has easy travel access from all areas by Tube and bus. In London, I am studying in the world centre of business.

"After my studies, I want to go back to my home country to start my own business, using the skills and knowledge I've gained from my MBA."

ALINA MARIA DOBRA, MBA

INTERNSHIPS

We offer the chance to complete a 12 week internship in one of our University's busy departments such as Business Development, Academic Support, IT, Marketing and Admissions or HR. It's a great way to develop the key skills employers are looking for.

"Each day of my internship was a daily learning experience for me. I always had different daily tasks, and needed to work with colleagues as a team. This experience gave me a taste of the real world where I was able to take the theories I learned from my lectures and put them into practice."

**STONNEY AMPO, MARKETING INTERN,
UNIVERSITY OF SUNDERLAND IN LONDON**



MY MOMENT:

"The skills I developed and the amazing experience itself."

OUR COURSES

Additional information on every course in this prospectus can be found by accessing the University website: london.sunderland.ac.uk. Simply key in the UCAS/CID code for your course when you search the course database. Each course entry can be printed off.

If you do not have internet access, please ring the helpline on +44 (0)20 7531 7333 or email: recruitment-london@sunderland.ac.uk and our friendly and knowledgeable staff will be happy to send you any relevant printed course information or chat through your options and chosen course with you.

BE INSPIRED...

Research at the University of Sunderland spans across many subject areas from digital technology to material science, from health and wellbeing to media and culture (to name just a few) and is recognised as having impact at a national and international level.

What makes our research stand out is its relevance to the real world and that it informs all areas of our teaching. That means that our academics are not only great teachers but also at the leading edge of their subject area delivering a great experience for our students, and ground-breaking outcomes for our community and the wider world.

...AND TAUGHT BY THE BEST

Our great teaching is reflected in our Silver rating in the Teaching Excellence Framework (TEF) assessment.

We are ranked alongside other institutions such as the University of Warwick, Brunel University London and the University of Manchester.

The TEF judges highlighted the excellent outcomes our students achieve thanks to our strong relationships with employers, enabling our graduates to begin their careers with relevant work-ready knowledge and skills.



MASTER OF BUSINESS ADMINISTRATION MBA

This is the course for future leaders of the business world. This CMI accredited qualification is one of the most sought-after postgraduate degrees we offer. Think of it as an investment in yourself. One that will prepare you for any number of management positions in nearly any organisation, anywhere in the world. Senior positions are worth fighting for. Welcome to your leadership challenge.

CAREER PATH

Our Master of Business Administration (MBA) course aims to accelerate your promotion to well-paid positions of leadership. It prepares you for new opportunities in a range of senior roles.



IN THEIR WORDS

"The University of Sunderland in London is an ideal place to study and the city is a wonderful place to live. Making the decision to come to the UK was the biggest challenge I have faced financially and socially, but I now I have a Master's degree. This led me to my current job as part of the Fraud Investigation and Dispute Services team at Ernst & Young LLP in Mumbai."

ABHISHEK K SHAH, MBA FINANCE GRADUATE
ASSURANCE ASSOCIATE CONSULTANT
ERNST & YOUNG LLP, MUMBAI

MASTER OF BUSINESS ADMINISTRATION MBA (GENERAL ROUTE)

This course, the broadest of our MBA courses, covers general business topics including leadership, corporate strategy and information management. There is also flexibility – you can choose an optional module and dissertation topic to reflect your personal interests and aspirations.

MODULES INCLUDE:

Managing and Leading People / Operations Management / Marketing Management / International Business Environment / Financial Management and Control / Global Corporate Strategy / Innovation and Technology Transfer / MBA Dissertation / International Human Resource Management / Global Logistics and Supply Chain Management / Management Accounting and Control / International Marketing*

*Options will be available depending on the number of students enrolled onto the course.

TYPICAL ENTRY REQUIREMENTS:

- A lower second-class honours degree or international equivalent with a minimum of six months' work experience
- A third-class honours degree or UK equivalent professional qualification with a minimum of two years' work experience
- Relevant professional or managerial experience demonstrated by a portfolio of evidence

Work experience must be at a graduate level, in either a managerial or professional capacity, which could include voluntary work, placements, internships or project management.

For more information please see london.sunderland.ac.uk



MASTER OF BUSINESS**ADMINISTRATION (FINANCE) MBA**

This MBA has a particular focus on finance and aims to prepare you for a senior role with major financial responsibility. The course covers the core MBA modules with a particular focus on the financial strategy and operations of a business.

MODULES INCLUDE:

Management Accounting and Control / Financial Management and Control / Managing and Leading People / Operations Management / Marketing Management / International Business Environment / Global Corporate Strategy / Innovation and Technology Transfer / MBA Dissertation

TYPICAL ENTRY REQUIREMENTS:

- A lower second-class honours degree or international equivalent with a minimum of six months' work experience
- A third-class honours degree or UK equivalent professional qualification with a minimum of two years' work experience
- Relevant professional or managerial experience demonstrated by a portfolio of evidence

Work experience must be at a graduate level, in either a managerial or professional capacity, which could include voluntary work, placements, internships or project management.

For more information please see london.sunderland.ac.uk

MASTER OF BUSINESS**ADMINISTRATION (HUMAN RESOURCE MANAGEMENT) MBA**

This MBA has a particular focus on human resource management and it prepares you for senior roles in HRM as well as general roles in management. Our aim is to accelerate your promotion to well-paid positions of leadership in a human resources environment or a generalist managerial role.

MODULES INCLUDE:

Managing and Leading People / Operations Management / Marketing Management / International Business Environment / Global Corporate Strategy / Financial Management and Control / Innovation and Technology Transfer / MBA Dissertation / International Human Resource Management

TYPICAL ENTRY REQUIREMENTS:

- A lower second-class honours degree or international equivalent with a minimum of six months' work experience
- A third-class honours degree or UK equivalent professional qualification with a minimum of two years' work experience
- Relevant professional or managerial experience demonstrated by a portfolio of evidence
- Work experience must be at a graduate level, in either a managerial or professional capacity, which could include voluntary work, placements, internships or project management.

For more information please see london.sunderland.ac.uk

MASTER OF BUSINESS**ADMINISTRATION (MARKETING) MBA**

This MBA focuses on developing your expertise in marketing. The curriculum is designed to help advance your career to well-paid leadership positions in the field of marketing or in any other management function.

MODULES INCLUDE:

Marketing Management / Managing and Leading People / Operations Management / International Business Environment / Global Corporate Strategy / Financial Management and Control / International Marketing / Innovation and Technology Transfer / MBA Dissertation / International Marketing

TYPICAL ENTRY REQUIREMENTS:

- A lower second-class honours degree or international equivalent with a minimum of six months' work experience
- A third-class honours degree or UK equivalent professional qualification with a minimum of two years' work experience
- Relevant professional or managerial experience demonstrated by a portfolio of evidence
- Work experience must be at a graduate level, in either a managerial or professional capacity, which could include voluntary work, placements, internships or project management.

For more information please see london.sunderland.ac.uk

MASTER OF BUSINESS**ADMINISTRATION (SUPPLY CHAIN MANAGEMENT) MBA**

The focus of this MBA is to develop your expertise in the field of supply chain management. You will undertake a specialist module in global logistics to prepare you for well-paid positions in supply chain management or senior leadership.

MODULES INCLUDE:

Global Logistics and Supply Chain Management / Operations Management / Managing and Leading People / Marketing Management / International Business Environment / Global Corporate Strategy / Financial Management and Control / Innovation and Technology Transfer / MBA Dissertation

TYPICAL ENTRY REQUIREMENTS:

- A lower second-class honours degree or international equivalent with a minimum of six months' work experience
- A third-class honours degree or UK equivalent professional qualification with a minimum of two years' work experience
- Relevant professional or managerial experience demonstrated by a portfolio of evidence
- Work experience must be at a graduate level, in either a managerial or professional capacity, which could include voluntary work, placements, internships or project management.

For more information please see london.sunderland.ac.uk

MASTER OF BUSINESS ADMINISTRATION (TOP-UP) MBA

The MBA top-up enables you to top up a Postgraduate Diploma in Management Studies to an MBA. We offer two options to enhance your career prospects - the 60 credit top-up takes 6-months to complete, the 90 credit option will take 7-months.

MODULES INCLUDE:

- 90 credit option - International Business Environment / Global Corporate Strategy / MBA Dissertation
- 60 credit option - MBA Dissertation

TYPICAL ENTRY REQUIREMENTS:

The Edexcel BTEC Diploma in Management Studies or the CMI Executive Diploma, plus a demonstration that you can operate successfully in a managerial role.

For more information please see london.sunderland.ac.uk

MASTER OF BUSINESS MANAGEMENT MBM

MBM Master of Business Management is a challenging course which will deliver the skills and knowledge you need for a successful managerial career. Covering a wide range of business topics, including operations, financial management, marketing, corporate strategy, leadership and managing people, the MBM is an excellent option for graduates who do not have the work experience required for an MBA.

MODULES INCLUDE:

Developing Skills for Business Leadership / Understanding Organisational Performance / Operations Management / International Business Environment / Accounting and Financial Management / Marketing Management / Managing and Leading People / Global Corporate Strategy / Management Futures Project

TYPICAL ENTRY REQUIREMENTS:

- At least a lower second-class honours degree.

For more information please see london.sunderland.ac.uk



BUSINESS, MANAGEMENT AND FINANCE

The world of business doesn't wait for anyone. That's why to succeed as a future leader in this fast-changing environment, you need to be fully aware of the things that make the wheels turn. From international markets and innovation to adaptability and accountability, we base our degrees on real-world business. Step up to the mark and become a multi-skilled graduate, ready to begin a rewarding and challenging business career.

CAREER PATH

These courses equip you to start a leadership or management role in a wide range of worldwide industries. Our business graduates have been employed by IBM, Procter & Gamble, BT, EY, Nissan, Marriot Hotels and Adidas. What will your success story be?



IN THEIR WORDS

"The University of Sunderland in London is one of the best universities in London with friendly staff, conscientious teachers and a good study environment with diverse cultures of different students who come from different countries. I am very proud to be a student here. I highly recommend it."

**XUAN ANH TRAN - BA (HONS) BUSINESS
AND MANAGEMENT**

BA (HONS) ACCOUNTING AND FINANCE

Our accounting and finance degree is closely tied into real-world professional requirements that, when you've successfully completed it, you'll be exempted from nine exam papers for an accountancy qualification from the Association of Chartered Certified Accountants (ACCA).

MODULES INCLUDE:

Introduction to Financial Accounting / Introduction to Management Accounting / Economics / Financial Accounting / Business Accounting / Business Modelling for Decision Making / Managing Projects / Contemporary Developments in Business Management.

TYPICAL ENTRY REQUIREMENTS:

- To be considered for an undergraduate degree course it is necessary to have the equivalent of a minimum of two UK General Certificate (GCE) Advanced Level Passes.
- You can also apply for advanced entry to an undergraduate course (for example, level 2 or 3) if you have a diploma equivalent to one or two years of a UK honours degree in relevant subject.

For more information please see london.sunderland.ac.uk

BA (HONS) ACCOUNTING AND FINANCIAL MANAGEMENT (TOP-UP)

This one year top-up course allows you to convert an HND, foundation degree or advanced diploma in a business related subject to an honours degree with just one year of study. You will leave the course as a highly-desirable graduate with an excellent business education.

MODULES INCLUDE:

Financial Management / Strategic Management Accounting / Business Modelling for Decision Makers / International Financial Reporting / Managing Projects / Contemporary Developments in Business and Management

TYPICAL ENTRY REQUIREMENTS:

- An HND or equivalent qualification in a relevant subject area.

For more information please see london.sunderland.ac.uk

BA (HONS) BUSINESS MANAGEMENT (TOP-UP)

Effective managers are crucial to the success of every organisation. If you see yourself in this role and would like to turn your business-related HND (or similar) into a full honours degree, this course enables you to top up your qualification with just one more year of study.

MODULES INCLUDE:

Strategic Management Accounting / Strategic Management of Human Resources / Marketing Strategy / Managing Projects / Contemporary Developments in Business and Management / Strategic Management

TYPICAL ENTRY REQUIREMENTS:

- An HND or equivalent qualification in a relevant subject area.

For more information please see london.sunderland.ac.uk

BA (HONS) BUSINESS AND MANAGEMENT

Good managers are highly sought after in every area of business across the world. On this course you will cover a range of business practices including marketing, finance, human resources, and operations. In your final year, you can specialise in a range of subjects of your choice. The course features a strong international perspective that will equip you with an understanding of business in the global economy.

MODULES INCLUDE:

Contemporary Debates in Business Management / Understanding the Business Environment / Understanding Business Introduction to Strategic Management / Developing Career Prospects / Responsible Business / Operations Management / Financial Management

TYPICAL ENTRY REQUIREMENTS:

- To be considered for an undergraduate degree course it is necessary to have the equivalent of a minimum of two UK General Certificate (GCE) Advanced Level passes.

For more information please see london.sunderland.ac.uk

BA (HONS) BUSINESS AND MANAGEMENT EXTENDED

This four year extended course is for people who would like to study business at degree level, but don't meet the normal entry requirements. The first year of the course provides you with all the necessary study skills required for pursuing your degree.

MODULES INCLUDE:

Information Technology for Business Use / Organisational Behaviour and the Management of People / Introduction to HRM and Talent Development / Introduction to Accounting and Finance / Introduction to Operations and Services / Introduction to Strategic Management / Strategic Management

TYPICAL ENTRY REQUIREMENTS:

- This course can provide an alternative route onto Business and Management BA (Hons) for people with the following situations:
- You have relevant industrial experience but lack formal entry qualifications
- You have previously studied A Level or equivalent but failed to gain enough UCAS points for entry onto an undergraduate business course
- You are returning to education and lack the formal entry qualifications required for an undergraduate business course
- You want to refresh your business knowledge and study skills
- You must also have GCSE grade C or above in Mathematics and English Language. Equivalent alternative qualifications are also accepted, such as Level 2 Key Skills in Communication and Application of Number.
- In addition to academic qualifications, you must also have a minimum level of English language skills. If English is not your first language, please see our English language requirements.

For more information please see london.sunderland.ac.uk

IN THEIR WORDS

"I heard about the University during my MA research, and the MBA Top-up route appealed to me. I previously completed a Chartered Management Institute (CMI) Post Graduate Diploma, and this allowed me access to the course.

The Canary Wharf location is ideal with all of the major financial institutes within a mile radius, so whether you are interested in finance, management or HR it is all just on the doorstep."

STEWART RIVERS - EXTERNAL MODERATOR, CHARTERED MANAGEMENT INSTITUTE (CMI) MBA TOP-UP

BA (HONS) BANKING AND FINANCE (TOP-UP)

This one year top-up course allows you to convert a business related HND, foundation degree or advanced diploma into an honours degree with just one more year of study. You will enhance your expertise in decision-making about financial resources and develop fresh approaches for problem solving in the workplace.

MODULES INCLUDE:

Financial Management / Money, Banking and Finance / Financial Markets / Managing Projects / International Banking / Contemporary Developments in Business Management

TYPICAL ENTRY REQUIREMENTS:

- An HND or equivalent qualification in a relevant subject area.

For more information please see london.sunderland.ac.uk

MSC FINANCE AND MANAGEMENT

MSc Finance and Management is perfect for those looking to develop their knowledge or wish to pursue a career in finance. A masters degree in finance and management provides a pathway to senior management - half of the chief executives in Britain's top 100 companies have a background in accountancy or financial management.

MODULES INCLUDE:

Corporate Finance / Financial Econometrics / Global Corporate Strategy / International Financial Markets / International Trade / International Financial Statement / Project Management

TYPICAL ENTRY REQUIREMENTS:

- At least a lower second-class honours degree.

For more information please see london.sunderland.ac.uk

MA MARKETING

Whether you're a marketer who's ready to take the next step, or a professional who wants to move into marketing from another field, this Master's degree is for you. You'll cover all the core modules needed to gain a CIM-accredited postgraduate qualification. And with that you can qualify for more senior marketing positions, and make a positive difference in your role.

MODULES INCLUDE:

Strategic Marketing Management / Developing Skills for Business Leadership linked in with PALS / Applied Research Methods for Business Management

TYPICAL ENTRY REQUIREMENTS:

- At least a lower second-class honours degree.

For more information please see london.sunderland.ac.uk

TOURISM

It's easy to see why tourism, hospitality and events are popular industries. These are growth areas, providing wide-ranging opportunities for work. So, it's good to know that the University of Sunderland belongs to the Institute of Hospitality (IoH) education membership scheme. The IoH is the industry's leading network and promotes the highest professional standards of management and education.

CAREER PATH

These courses, which do not require any previous experience, help to prepare you for management opportunities in tourism, hospitality and events, in both the private and public sectors.



IN THEIR WORDS

"The study environment here is brilliant; a culturally enriching study experience. Put simply, the University of Sunderland in London is the right place for up-to-date learning."

RARA ANDINI, MSC TOURISM & HOSPITALITY

DID YOU KNOW?

Employability in the tourism sector is projected to increase by 11% by 2020, more than twice the amount projected for the UK workforce.

UK COMMISSION FOR EMPLOYMENT AND SKILLS

The University of Sunderland is ranked second in the UK for hospitality, events and tourism according to the **GUARDIAN UNIVERSITY GUIDE 2019**

BSC (HONS) INTERNATIONAL TOURISM AND HOSPITALITY MANAGEMENT (TOP-UP)

Do you have an HND or foundation degree in a subject related to travel, tourism or hospitality? Would you like to top-up to an honours degree with just one year of study? If so, this course is a perfect route into an exciting and rewarding career in the world's biggest industry which offers millions of job opportunities around the world.

MODULES INCLUDE:

Strategic Planning for Tourism and Leisure / Urban Tourism / e-Tourism / International Hospitality Management / Gastronomy / Service Quality

TYPICAL ENTRY REQUIREMENTS:

- An HND or foundation degree in a subject related to tourism/ hospitality.

For more information please see london.sunderland.ac.uk



BSC (HONS) INTERNATIONAL TOURISM AND HOSPITALITY MANAGEMENT

With over 2 million UK jobs, tourism and hospitality are exciting industries to pursue your career. The core modules of this course prepare you for the workplace with in-demand skills - many of our graduates from this course have secured a range of managerial roles in this growing sector.

MODULES INCLUDE:

Fundamentals of Tourism / Leisure and Hospitality / Study Skills for the Hospitality Sector / Tourism and Heritage Management / Global Tourism Marketing and Business for the Hospitality Sector / Impact of Events / Research Methods for Tourism, Hospitality and Events / MICE: Meetings, Incentives, Conferences and Exhibitions / Current Issues in Tourism and Hospitality / Cultural Tourism, Festivals and Events / Destinations Branding

TYPICAL ENTRY REQUIREMENTS:

- To be considered for an undergraduate degree course it is necessary to have the equivalent of a minimum of two UK General Certificate (GCE) Advanced Level passes.
- You can also apply for advanced entry to an undergraduate course (for example, level 2 or 3) if you have a diploma equivalent to one or two years of a UK honours degree in relevant subject.

For more information please see london.sunderland.ac.uk

BSC (HONS) INTERNATIONAL TOURISM AND HOSPITALITY MANAGEMENT EXTENDED

If you have an HND or foundation degree in a subject related to travel you are able to top it up to an honours degree with just one more year of study. This course will help you secure an exciting and rewarding career in the world's single biggest industry.

MODULES INCLUDE:

Contemporary Business Issues in a Globalised Environment / Organisational Behaviour and the Management of People / Information Technology for Business Use / Tourism and Heritage Management / Impacts of Festivals and Events / Fundamentals of Tourism, Leisure and Hospitality / Global Tourism / Study Skills for the Hospitality Sector / Marketing and Business for the Hospitality Sector

TYPICAL ENTRY REQUIREMENTS:

- This course can provide an alternative route onto International Tourism and Hospitality Management BSc (Hons) for people with the following situations:

- You have relevant industrial experience but lack formal entry qualifications
- You have previously studied A Level or equivalent but failed to gain enough UCAS points for entry onto an undergraduate Tourism course
- You are returning to education and lack the formal entry qualifications required for an undergraduate Tourism course
- You want to refresh your Tourism knowledge and study skills
- You must also have GCSE grade C or above in Mathematics and English Language. Equivalent alternative qualifications are also accepted, such as Level 2 Key Skills in Communication and Application of Number.
- In addition to academic qualifications, you must also have a minimum level of English language skills. If English is not your first language, please see our English language requirements.

For more information please see london.sunderland.ac.uk

MSC TOURISM AND HOSPITALITY

The tourism and hospitality industry are set to grow rapidly as the worldwide middle class population grows by a billion people between 2010 and 2020. This masters course develops skills that are needed by restaurant entrepreneurs, hotel managers, resort co-ordinators and for other key managerial roles within the sector.

MODULES INCLUDE

Tourism and Concepts and Issues / Critical Theories and Methods for Tourism, Hospitality and Events / Hospitality Management Studies / Tourism and Hospitality Major Project / Current Practices in Tourism / Hospitality and Events

TYPICAL ENTRY REQUIREMENTS:

- At least lower second-class honours degree in any discipline.

For more information please see london.sunderland.ac.uk

BSC (HONS) EVENTS MANAGEMENT

Events management is one of the most diverse and fast-paced career options around. If you want to learn what it takes to deliver world-class events this course is for you. Our ambition is to help you translate key management theories into practice. You will have lots of opportunities to get straight into the nuts and bolts of organising events. Work placements will also allow you to experience working on live events and make important contacts in the events industry. Students can also choose to complete a yearlong placement between the second and final year of the course. It is a fantastic chance to enhance your practical skills.

MODULES INCLUDE:

Staging Events / Impacts of Festivals and Events / Experiencing Events / Managing the Event / Cultural Tourism, Festivals and Events / Managing Entrepreneurship, Innovation and Creativity / Contemporary Issues in Events / Events Fieldwork / Events and the Creative Industries / Event Planning for Cities / Sport Tourism and Mega Events

MSC TOURISM AND HOSPITALITY (DISSERTATION ONLY)

Do you want to top-up a postgraduate diploma in tourism and hospitality to a full masters degree? This course allows you to complete the final dissertation stage that's needed to gain a masters qualification.

MODULES INCLUDE:

Tourism and Hospitality Project

TYPICAL ENTRY REQUIREMENTS

- Postgraduate/Professional Diploma in Tourism and Hospitality Management

For more information please see london.sunderland.ac.uk

TYPICAL ENTRY REQUIREMENTS:

- To be considered for an undergraduate degree course it is necessary to have the equivalent of a minimum of two General Certificate (GCE) Advanced Level passes.
- You also for advanced entry to an undergraduate course (for example, level 2 or 3) if you have a diploma equivalent to one or two years of a UK honours degree in a relevant subject.

For more information please see london.sunderland.ac.uk

BSC (HONS) EVENTS MANAGEMENT EXTENDED

This four year extended course is for people who want to study BA (Hons) Events Management, but don't meet the normal entry requirements.

MODULES INCLUDE:

Contemporary Business Issues in a Globalised Environment / Introduction to Organisational Management / Fundamentals of Events / Staging Events / Impacts of Festivals and Events / Experiencing the Events / Marketing and Business for the Hospitality Sector / Research Methods for Tourism, Hospitality and Events / Cultural Tourism, Festivals and Events / Managing the Event / MICE: Meetings, Incentives, Conferences and Exhibitions / Events Management Research Dissertation / Contemporary Issues in Events

TYPICAL ENTRY REQUIREMENTS:

This course can provide an alternative route onto Events Management BA (Hons) for people with the following situations:

- You have relevant industrial experience but lack formal entry qualifications

- You have previously studied A Level or equivalent but failed to gain enough UCAS points for entry onto an undergraduate events management course
- You are returning to education and lack the formal entry qualifications required for an undergraduate events management course
- You want to refresh your events management knowledge and study skills
- You must also have GCSE grade C or above in Mathematics and English Language. Equivalent alternative qualifications are also accepted, such as Level 2 Key Skills in Communication and Application of Number.

In addition to academic qualifications, you must also have a minimum level of English language skills. If English is not your first language, please see our English language requirements.

For more information please see london.sunderland.ac.uk



NURSING

Nursing is a career which rewards and challenges in equal measure. But the main aspect, the part which attracts so many people, is the fact that you have the chance to make a real difference to people's lives. Adult nurses make up the largest part of the NHS workforce with over 176,000 in acute settings. In the future, more adult nursing jobs will be based in the community rather than hospitals as more care is delivered outside of acute environments. Wherever you decide to focus, we'll help you on your way.

CAREER PATH

These courses prepare you to gain promotion into higher-banded roles in the NHS, health and social care management, health improvement and research, hospices and charities. Other graduates have progressed to doctoral programmes and moved into lecturing and teaching.



IN THEIR WORDS

High standards of teaching and opportunities to meet new people convinced Esther O moyemi that the University of Sunderland in London was the right place for her to study a nursing degree.

"I was initially attracted to the University of Sunderland because of the popularity of the University and the location. The standards of teaching were high and the lecturers were skilled and disciplined.

"I also enjoyed meeting students from other countries. One of my abiding memories of my time at the University of Sunderland is the opportunity I had to network with colleagues from different nations."

**ESTHER O moyemi, DEPUTY DIRECTOR AT LAGOS UNIVERSITY TEACHING HOSPITAL, NIGERIA
BSC (HONS) NURSING**

BSC (HONS) NURSING (TOP-UP)

Would you like to improve your current qualification in nursing and enhance your career prospects? Our nursing top-up course allows you to top-up your current diploma nursing qualification to an honours degree in only one year of study.

MODULES INCLUDE:

Research Methods / Theory and Practice in Health Care / Evidence-Based Practice / Management of Care / Preparation for Mentorship / Law and Ethics in Health Care / Dissertation

TYPICAL ENTRY REQUIREMENTS:

Students are required to be a registered nurse with the Nursing and Midwifery Council and hold an HE diploma Level qualification (Level 5) for entry onto the course.

For more information please see london.sunderland.ac.uk

MSC NURSING

Nursing is increasingly a profession where higher qualifications are required for promotion. The content of this course is based on the NHS Leadership Framework, including managing people, working within teams, making decisions, evaluating impact and facilitating transformation. Recent graduates from the course have gained promotion into higher band roles in the NHS. Other graduates have progressed to doctoral programmes and moved into lecturing and teaching.

MODULES INCLUDE:

Research Methods and Project Management / Sociological Perspectives in Health / Epidemiology for Public Health / Teaching, Learning, Leadership

TYPICAL ENTRY REQUIREMENTS:

We require applicants to hold an honours degree in nursing and an IELTS with an overall score of 6.5 (or equivalent).

For more information please see london.sunderland.ac.uk



BSC (HONS) HEALTH AND SOCIAL CARE (TOP-UP)

Our Health and Social Care Top-Up programme examines key issues that affect the health and wellbeing of individuals and communities. Graduates in this expanding field are uniquely positioned to meet 21st century health and social care needs across the UK and the world. Organisations that employ our graduates include the NHS, health and social care management, health improvement and research, drug and alcohol agencies, mental health agencies, hospices and charities.

MODULES INCLUDE:

Research Methods / Theory and Practice in Health Care / Evidence-Based Practice / Management of Care / Preparation for Mentorship / Law and Ethics in Health Care / Dissertation

TYPICAL ENTRY REQUIREMENTS:

An HND or foundation degree in a subject related to health and social care.

For more information please see london.sunderland.ac.uk

MSC PUBLIC HEALTH

Do you want to play a role in improving the health of communities and populations? Public Health MSc will equip you with the knowledge and skills you need to make a genuine contribution to public health policy and practice, whether your interest is on local community initiatives, or in more regional or international approaches.

MODULES INCLUDE:

Sociological Perspectives in Health / Epidemiology / Global Issues in Health / Applied Public Health / Applied Research Methods and Project Management / Brief Interventions / Masters Project

TYPICAL ENTRY REQUIREMENTS:

At least a 2:2 honours degree.

For more information please see london.sunderland.ac.uk

POSTGRADUATE RESEARCH

PROFESSIONAL DOCTORATE DPROF

The Professional Doctorate is the same level of academic qualification as a PhD, and is designed for experienced professionals who wish to undertake a programme that is applied in nature and of practical value to their career. The Professional Doctorate enables you to explore the link between issues in the professional practice with relevant academic theory, and apply this to the critical investigation of problems, the creation of solutions and the introduction of change within the workplace.

MODULES INCLUDE:

Critical Reflective Practice / Practice based Research / Planning and Contextualisation / Critical Debate in Professional Practice

TYPICAL ENTRY REQUIREMENTS:

The normal entry requirement for a research degree is a UK honours degree (first or upper second class) or a UK master's degree or a qualification which is regarded as equivalent and an IELTS with an overall score of 6.5 (or equivalent). We will consider candidates with other qualifications, looking at evidence of academic ability such as published work.

You will be asked to write a 2-3 page research proposal that specifies the aims of your doctoral project, project's relevance to your workplace and profession, proposed methodology and techniques for analysis and provisional time plan.

For more information please see london.sunderland.ac.uk



DEVELOP YOUR ENGLISH

English for Academic Purposes courses are available to all international students applying for full-time study. It is recommended that students complete one of these courses to get the most out of their studies. They are held four times a year in the run-up to the start of a degree course and are suitable for applicants with IELTS (or an equivalent qualification).

These courses aim to equip students with the skills needed to succeed on their main course of study. They include lectures, seminars, one-to-one tutorials and directed independent study.

The following courses are designed to increase your current level of English from IELTS 4.5 to 6.0 accordingly, which are the levels required in order to succeed in an undergraduate or postgraduate degree at the University of Sunderland in London.

English for Academic Purposes University Preparation Course: Pre-Intermediate

English for Academic Purposes University Preparation Course: Intermediate

English for Academic Purposes University Preparation Course: Upper-Intermediate

As well as learning in a classroom, you will also visit places of interest in London and other cities in England. This course will develop your English language skills in reading, writing, speaking and listening. With our help you can enjoy using English for study and research purposes.

For more information please see:
london.sunderland.ac.uk

INTERNATIONAL ENGLISH LANGUAGE

TESTING SYSTEM (IELTS)

EXAM PREPARATION COURSE (ACADEMIC)

The aims of the (IELTS) Exam Preparation Course (Academic) is to equip students with the knowledge, skills and practice to sit the IELTS exam.

The International English Language Testing System (IELTS) Exam Preparation Course (Academic), is a short 2 week course, intensively delivered for 5 hours a day, Monday to Friday.

This course will be particularly beneficial for Nursing top-up students whose registration with the Nursing Midwifery Council (NMC) requires IELTS scores of 7 across all four skills (reading, writing, listening and speaking).

For more information please see: london.Sunderland.ac.uk

ENTRY REQUIREMENTS

ACADEMIC QUALIFICATIONS

The University recognises all national and internationally accredited qualifications. Each application is considered on its own merits and we give careful consideration to other factors such as work experience and maturity.

To be considered for an undergraduate degree course it is necessary to have the equivalent of a minimum of two UK General Certificate of Education (GCE) Advanced Level passes.

You can also apply to study on an advanced level undergraduate (for example, level 2 or 3) if you have a diploma equivalent to one or two years of a UK honours degree in a related subject area.

For postgraduate courses it is necessary to have at least a second class (2:2) UK honours degree or equivalent international qualification and in some cases, relevant work experience.

ENGLISH LANGUAGE REQUIREMENTS

If English is not your first language, you will be required to demonstrate evidence of having achieved a score of 6 overall in the International English Language Testing Scheme (IELTS) with all element scores at 5.5 or higher. An alternative approved Secure English Language Test (SELT) and the University's recognised English language qualifications/ tests (as approved by the University's Academic Board) are also accepted if the applicant's element scores are equivalent to those required for IELTS.

Please note: Some courses require a higher level of English language – read the course description carefully to see if this applies to your chosen course.

If you do not meet the required English language requirements, we recommend that you take one of our English improvement courses.

The purpose of these courses is to improve your skills to the level required in order to apply for a University.

Further information is available from the Admissions Office on: +44 (0)20 7531 7333 or email: admissions-london@sunderland.ac.uk

HOW TO APPLY

INTERNATIONAL AND POSTGRADUATE HOME/EU STUDENTS

For postgraduate and direct entry courses, apply direct to the University or contact your local office or agent in your home country. Check our website for details of your nearest regional office at:

london.sunderland.ac.uk/courses/howtoapply/yourcountry

APPLYING DIRECTLY TO THE UNIVERSITY

Go to london.sunderland.ac.uk/courses and select the course you wish to apply for.

- Click on Contact and Apply and follow the step-by-step guide through to completing your own online application form.
- Once you have completed this, you will be given a unique Personal ID number so you can be kept up-to-date with any developments in your application process.

UNDERGRADUATE HOME/EU STUDENTS

Please apply via the Universities and Colleges Admissions Service (UCAS) at ucas.com

DISABILITY AND SPECIFIC LEARNING DIFFICULTIES

If you have a disability or a specific learning difficulty it is important that you tell us about your particular needs when you apply so we can work with you to try and put appropriate support in place.

If you require advice please contact the Admissions

Office on: +44 (0)207 5317 333

or email: admissions-london@sunderland.ac.uk



STUDYING IN THE UK – IMMIGRATION AND VISAS

WHAT IS A VISA?

A visa is the permission granted to an individual to enter and stay in the UK. Your visa will be issued when you make a successful visa application.

DO YOU NEED TO APPLY FOR A VISA?

Students from countries outside the European Economic Area (EEA) and Switzerland, who are not already living in the UK may need a visa to enter and study in the UK.

APPLICATIONS MADE OUTSIDE THE UK

If you have applied to the University of Sunderland in London you will need to apply for a Tier 4 (General) student visa. Upon arrival you will be issued with a vignette to enter the UK, but then will be issued shortly after with a biometric residence permit known as a BRP card. You can apply for a Tier 4 (General) visa up to three months before the start date of your course, but only once you have received your Confirmation of Acceptance of studies also known as CAS.

It can take several weeks for a Tier 4 (General) visa application to be processed – check visa processing times for the country in which you are applying.

APPLICATIONS MADE INSIDE THE UK

If you are currently in the UK and need to extend your Tier 4 (General) visa, you must submit your application before your current visa expires.

POINTS TO CONSIDER

When you are issued with your visa, it will be issued to study at the University of Sunderland in London as stated in your CAS. The University of Sunderland and the University of Sunderland in London operate under one sponsor license number. Your visa will show the University's Sponsor License Number.

Under the universities sponsorship duties the University of Sunderland in London will be required to report to the Home Office of any student who obtains entry clearance under PBS (Points-based system) on the basis of our offer and who does not enrol at the start of the semester specified.

Students who enrol at the University of Sunderland in London but later decide to withdraw, interrupt or suspend their studies, or who fail to attend their classes for significant periods, will also be reported to the Home Office.

OUR LOCATIONS

LONDON, UK

UNIVERSITY OF SUNDERLAND IN LONDON

197 Marsh Wall
Docklands
London, E14 9SG
United Kingdom
Tel: +44 (0)20 7531 7333
Email: recruitment-london@sunderland.ac.uk
london.sunderland.ac.uk

SUNDERLAND, UK

UNIVERSITY OF SUNDERLAND

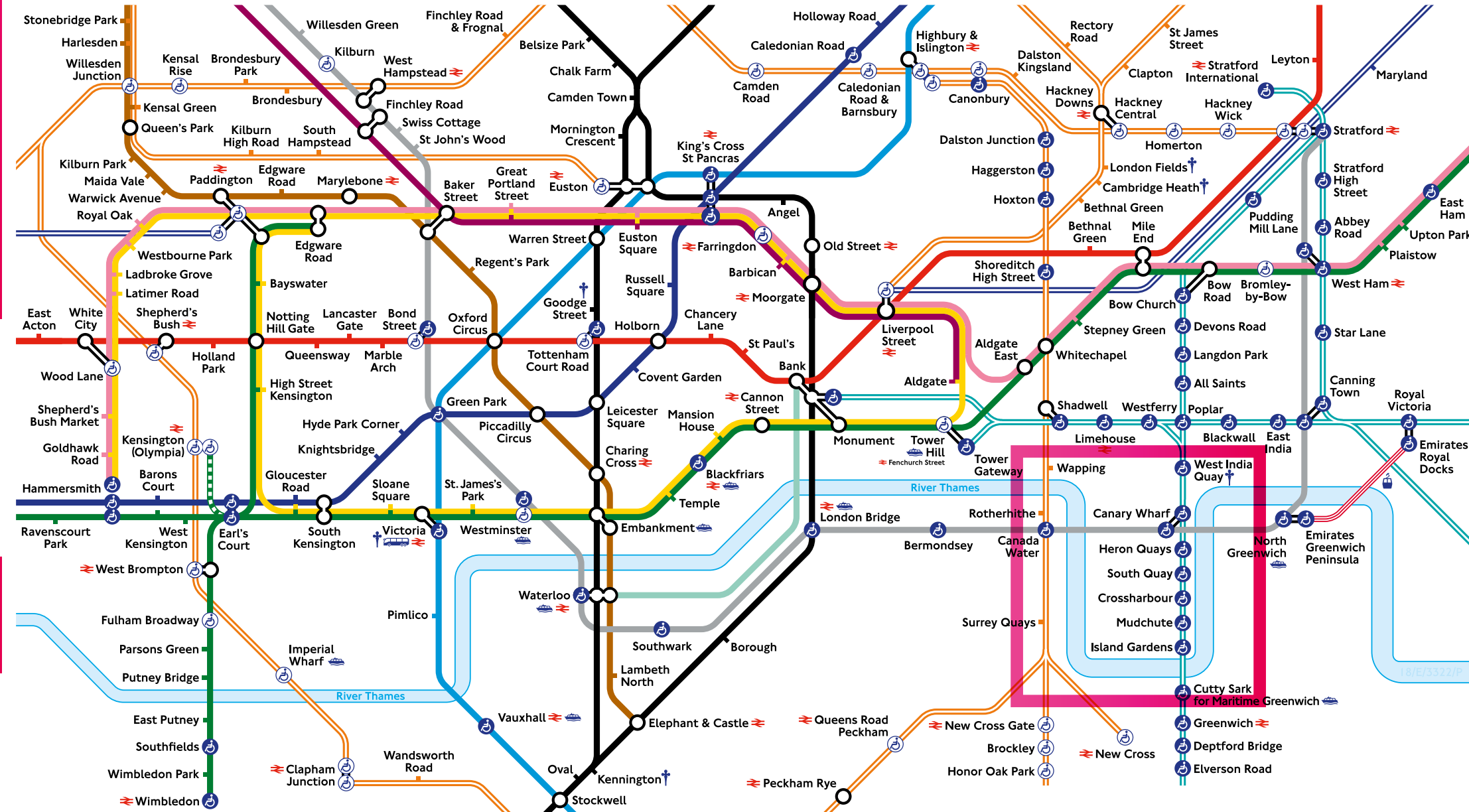
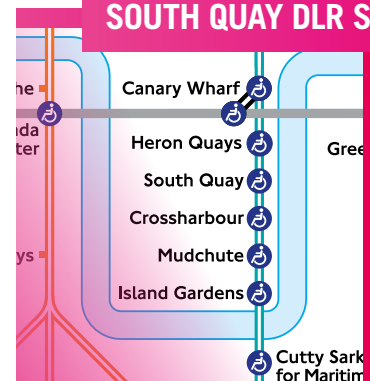
Edinburgh Building
City Campus, Chester Road
Sunderland, SR1 3SD
United Kingdom
Tel: +44 (0)191 515 3000
Email: student.recruitment@sunderland.ac.uk
sunderland.ac.uk

HONG KONG

UNIVERSITY OF SUNDERLAND IN HONG KONG

9/F South China Building
1-3 Wyndham Street
Central Hong Kong
Tel: +852 2992 0133
Email: enquire@sunderland.edu.hk
sunderland.edu.hk

UNIVERSITY OF SUNDERLAND IN LONDON – 2 MINUTES WALK FROM SOUTH QUAY DLR STATION



† Services or access at these stations are subject to variation. Please search 'TfL stations' for full details.

Bakerloo	Central	Circle	District	Hammersmith & City	Jubilee	DLR	Overground
Metropolitan	Northern	Piccadilly	Victoria		Waterloo & City	Emirates Air Line cable car	TfL Rail



© Transport for London Reg. user No. 18/E/3322/P Version E 05.2018 Correct at time of going to print